

## BRIEF REPORT: DEFICIENCY OF A DYSTROPHIN-ASSOCIATED GLYCOPROTEIN (ADHALIN) IN A PATIENT WITH MUSCULAR DYSTROPHY AND CARDIOMYOPATHY

RICARDO FADIC, M.D., YOSHIHIDA SUNADA, PH.D.,  
ANDREW J. WACLAWIK, M.D., SCOTT BUCK, M.D.,  
PAUL J. LEWANDOSKI, KEVIN P. CAMPBELL, PH.D.,  
AND BAREND P. LOTZ, M.D.

CARDIAC muscle is commonly affected in muscular dystrophies.<sup>1-4</sup> X-linked Duchenne's muscular dystrophy and Becker's muscular dystrophy are caused by mutations in the gene encoding dystrophin,<sup>5,6</sup> a membrane cytoskeletal protein.<sup>7</sup> In skeletal and cardiac muscle, dystrophin is associated with a large oligomeric complex of sarcolemmal glycoproteins.<sup>8,9</sup> This dystrophin-glycoprotein complex is composed of five glycoproteins (35, 43 doublet, 50, and 156 kd) and two proteins (25 and 59 kd). It spans the sarcolemma to provide linkage between the subsarcolemmal cytoskeleton and laminin, a major component of the extracellular matrix.<sup>9,10</sup>

In Duchenne's and Becker's muscular dystrophies, the primary deficiency in dystrophin is associated with a commensurate secondary reduction in the other dystrophin-associated proteins.<sup>11,12</sup> Disruption of the linkage between the cytoskeleton of the muscle fiber and the extracellular matrix has also been proposed as a factor in three autosomal recessive inherited diseases. In Fukuyama-type congenital muscular dystrophy, recently mapped to chromosome 9q31-33,<sup>13</sup> all the dystrophin-associated proteins, especially the 43-kd dystrophin-associated glycoprotein, have low expression.<sup>14</sup> This disorder is associated with structural abnormalities in the brain.<sup>15</sup>

The second type is merosin-negative congenital muscular dystrophy, which has been linked to chromosome 6q2.<sup>16,17</sup> Finally, severe childhood autosomal recessive muscular dystrophy has been attributed to a deficiency of the 50-kd dystrophin-associated glycoprotein.<sup>18</sup> Severe childhood autosomal recessive muscular dystrophy is prevalent in North Africa, and its clinical presentation is similar to that of Duchenne's and Becker's muscular dystrophies except that both sexes are affected.<sup>19</sup> The 50-kd dystrophin-associated glycoprotein was named "adhalin" from the Arabic *adhal* (muscle), and it has been linked in North African populations to an unidentified gene in the pericentromeric region of chromosome 13q.<sup>20</sup> Adhalin deficiency has also been reported in Europe,<sup>21</sup> Brazil,<sup>22</sup> Japan,<sup>23</sup> and Pakistan.<sup>24</sup> Interestingly,

the adhalin gene has been mapped to chromosome 17q12-21.33,<sup>25,26</sup> and missense mutations in the adhalin gene have been demonstrated.<sup>27</sup> Cardiac abnormalities develop in patients with the disease,<sup>19</sup> but the expression of the dystrophin-associated proteins, including adhalin, in cardiac muscle has not been determined.

We report here on a patient with muscular dystrophy and dilated cardiomyopathy related to adhalin deficiency in both skeletal and cardiac muscle.

### CASE REPORT

A 13-year-old boy who had previously been given a diagnosis of Becker's muscular dystrophy was referred to the University of Wisconsin Hospital and Clinics for evaluation of dilated cardiomyopathy and congestive heart failure. He was asymptomatic until nine years of age, when proximal muscle weakness developed. Examination at that time showed flexion contracture at the ankles, hypertrophy of the calf muscles, grade 4/5 strength (according to the criteria of the British Medical Research Council) in the hip flexors, and Gowers' sign. The serum creatine kinase level was 11,560 U per liter. There was no family history of consanguinity or neuromuscular disease. Both his sister and his mother had normal serum creatine kinase values.

The results of nerve-conduction studies were normal. Electromyographic examination revealed spontaneous activity and myopathic motor units in both arm and leg muscles. A biopsy of the biceps muscle demonstrated features of muscular dystrophy, including variation in fiber size, degenerating and regenerating fibers, and an increase in endomysial connective tissue. Analysis of dystrophin by Western blotting produced normal results. Clinically, the patient's muscle power continued to deteriorate slowly. A chest radiograph obtained at the age of 13 to evaluate symptoms of persistent cough showed global cardiomegaly. An electrocardiogram revealed sinus tachycardia with an RSR pattern in lead V<sub>1</sub> and normal Q waves in leads I, aVL, V<sub>5</sub>, and V<sub>6</sub>. There were no tall right precordial R waves. Echocardiography demonstrated enlargement of all cardiac chambers and a decreased left ventricular ejection fraction (22 percent).

Examination showed atrophy in the upper portions of the trapezius, the latissimus dorsi, the sternal and pectoral portions of the pectoralis major, and the distal vastus lateralis muscles. There was hypertrophy of the gastrocnemius, extensor digitorum brevis, and adductor hallucis muscles. The patient had 4/5 strength in the deltoids, biceps, wrist flexors, hip flexors and adductors, and foot dorsiflexors and evertors on both sides of the body. There was mild winging of the scapulae. During the next three weeks, his congestive heart failure became refractory to diuretic therapy and to inotropic therapy with dopamine, dobutamine, and milrinone. He required a left ventricular assist device for circulatory support for six weeks and then underwent successful orthotopic heart transplantation.

### METHODS

#### Muscle-Biopsy Specimens

After informed consent had been obtained, a biopsy of the vastus lateralis muscle was performed with the patient under local anesthesia. All studies were reviewed and approved by the institutional review board. At the time of cardiac transplantation, a sample of the left ventricle was obtained. The specimens were snap-frozen first in isopentane chilled to -150°C and later in liquid nitrogen, and were stored at -80°C. Standard histologic and histochemical techniques were used to prepare 7- $\mu$ m-thick frozen-muscle sections.<sup>26</sup> Samples were also processed for electron microscopy according to standard methods.<sup>26</sup> Muscles without histochemical abnormalities and muscles from patients with other muscular dystrophies were used as controls.

#### Antibodies

Monoclonal antibodies against the amino-terminus, carboxyl-terminus, and rod domain of dystrophin were obtained from Vector Laboratories (Burlingame, Calif.). A monoclonal antibody against adhalin (IVD3<sub>1</sub>) had been previously characterized.<sup>28</sup> Polyclonal anti-

From the Departments of Neurology (R.F., A.J.W., P.J.L., B.P.L.) and Pediatrics (S.B.), University of Wisconsin, Madison, and the Howard Hughes Medical Institute and the Department of Physiology and Biophysics, University of Iowa College of Medicine, Iowa City (Y.S., K.P.C.). Address reprint requests to Dr. Lotz at the Department of Neurology, University of Wisconsin Hospital and Clinics, 600 Highland Ave., Madison, WI 53792.

Supported in part by a grant from the Muscular Dystrophy Association. Dr. Campbell is an Investigator of the Howard Hughes Institute.

©1996, Massachusetts Medical Society.

bodies against syntrophin triplet (59-kd dystrophin-associated protein), beta-dystroglycan (43-kd dystrophin-associated glycoprotein), and 35-kd dystrophin-associated glycoprotein were affinity-purified from sheep antiserum against purified dystroglycan as previously described.<sup>29</sup>

Indirect immunofluorescence microscopy of 7- $\mu$ m-thick cryosections from skeletal- and heart-muscle specimens was performed as described previously.<sup>8,18,29-30</sup> The sections were examined under a Zeiss axioplan fluorescence microscope (Berlin, Germany), and photographs were taken under identical conditions with the same exposure time.

### RESULTS

Light microscopical examination of the biopsy specimen of vastus lateralis muscle showed necrosis and regeneration of muscle fibers, some of which occurred in groups of fibers; increased endomysial fibrosis; splitting of muscle fibers; abnormal variation in muscle-fiber size; an increased number of muscle fibers containing internal nuclei; and an increased number of hypercontracted fibers. Many necrotic fibers were invaded by macrophages. The random distribution of histochemically defined fiber types was preserved. In cardiac muscle, there was an abnormal variation in the sizes of both muscle fibers and nuclei, increased endomysial fibrosis, and in many fibers, a marked increase in acid phosphatase and glycogen, especially in perinuclear vacuoles. There was no clear evidence of necrosis or regeneration of muscle fibers.

Electron microscopy showed breaks in the sarcolemma, with preserved basal laminae, in both skeletal and cardiac muscle (Fig. 1). In cardiac muscle, the most characteristic finding was the presence of autophagic

vacuoles located in perinuclear regions, many of which contained glycogen particles. In skeletal muscle, there were ultrastructural changes corresponding to necrosis and regeneration of muscle fibers, including hypercontracted fibers. In muscle fibers with focal sarcolemmal defects, focal myofibrillar contractures were present adjacent to the breaks in some fibers.

The results of immunostaining in both skeletal and cardiac muscle showed normal reactivity for antibodies directed against the three portions of the dystrophin molecule (Fig. 2). Immunostaining of adhalin was drastically reduced in skeletal muscle, but a trace amount of adhalin was still present. However, in cardiac muscle, adhalin was undetectable by immunofluorescence. Immunostaining of the 35-kd dystrophin-associated glycoprotein was also significantly reduced in skeletal muscle and undetectable in cardiac muscle. It has been shown that adhalin deficiency causes a secondary reduction of 35-kd dystrophin-associated glycoprotein.<sup>18</sup> Immunostaining of other components of the dystrophin-glycoprotein complex, including  $\beta$ -dystroglycan and syntrophin triplet, was normal in both skeletal and cardiac muscle.

### DISCUSSION

Adhalin is deficient in the skeletal muscle of patients with severe childhood autosomal recessive muscular dystrophy.<sup>18</sup> This disease is relatively frequent in countries with a high rate of consanguinity.<sup>19</sup> Cardiomegaly has been described in patients with the disease,

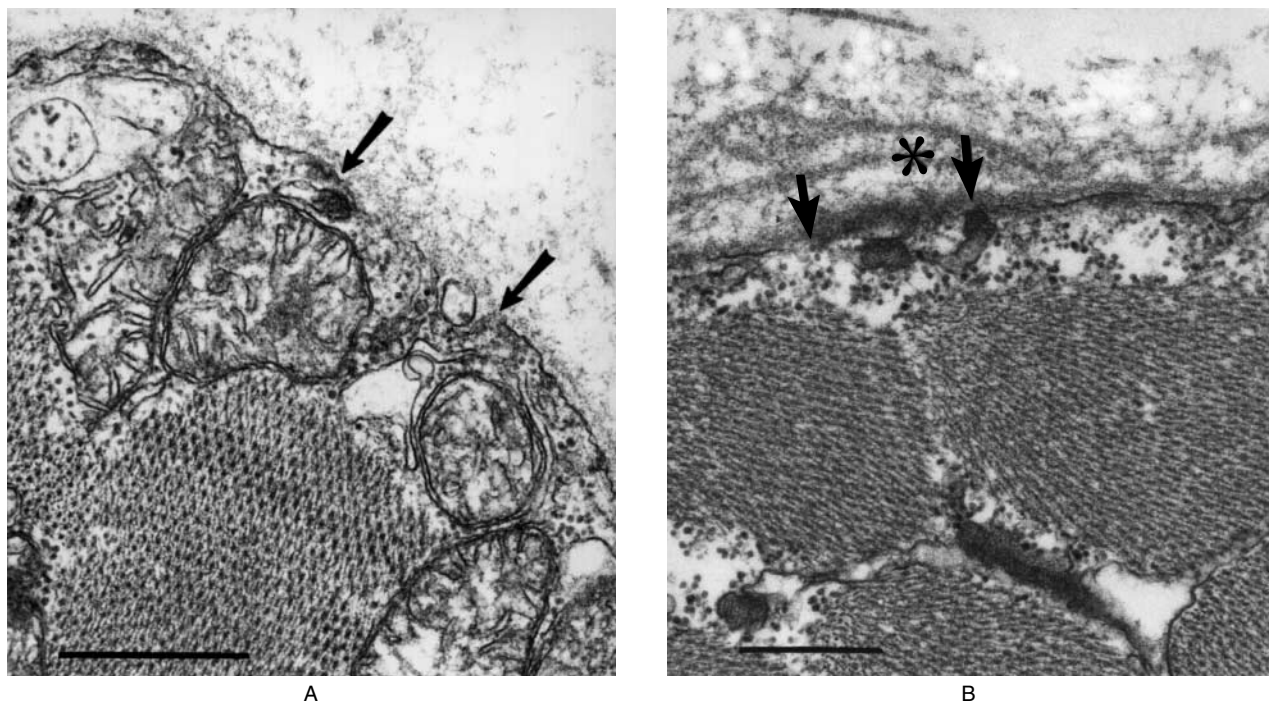


Figure 1. Electron Micrographs of Skeletal Muscle (Panel A) and Cardiac Muscle (Panel B) from the Patient. Sarcolemmal defects can be seen between the arrows. In the fiber regions under the defects, the myofibrils are not contracted. Multiple replications of the basal laminae are seen in relation to the sarcolemmal defect in Panel B (asterisk). The scale bars represent 500  $\mu$ m.

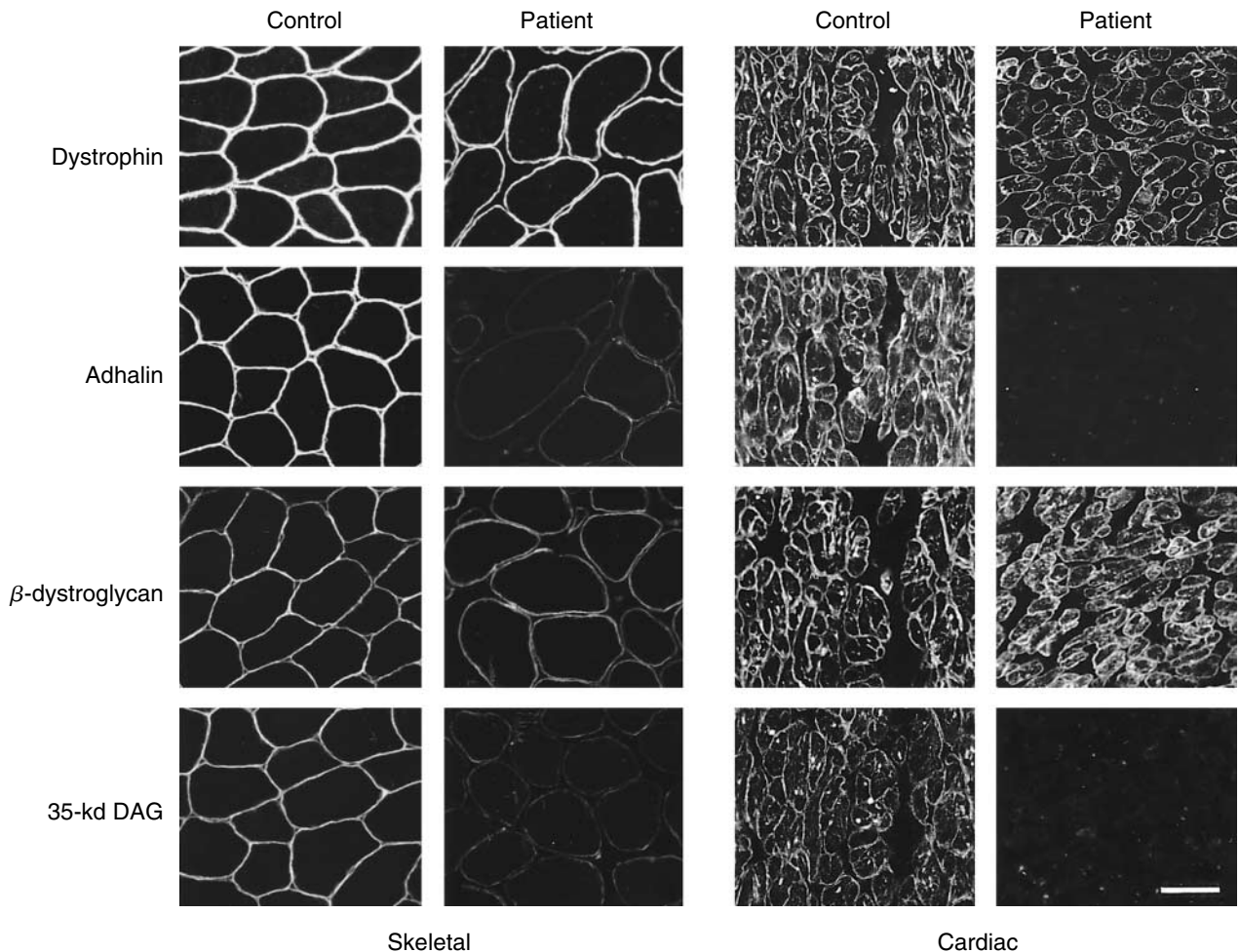


Figure 2. Skeletal and Cardiac Muscle from a Control and from the Patient Immunostained with Antibodies against Dystrophin, Adhalin,  $\beta$ -Dystroglycan, and 35-kd Dystrophin-Associated Glycoprotein (35-kd DAG).

Adhalin staining is dramatically reduced in the patient's skeletal muscle and absent in the cardiac muscle. There is a secondary decrease in staining for 35-kd dystrophin-associated glycoprotein in the patient's skeletal and cardiac muscle. The scale bar represents 500  $\mu$ m.

but our patient is noteworthy because he had end-stage cardiomyopathy related to a deficiency of adhalin in the myocardium. The immunohistochemical findings in the skeletal and cardiac muscle from our patient are similar to those in cardiomyopathic hamsters, in which both cardiomyopathy and skeletal myopathy are related to adhalin deficiency.<sup>31</sup> In our patient and in the animal model, inheritance is probably autosomal recessive.

Severe childhood autosomal recessive muscular dystrophy is phenotypically very similar to Duchenne's and Becker's muscular dystrophies, but it affects both males and females. It has a higher variability in the severity of the clinical course from one sibling to another, and symptoms suggestive of nervous system involvement have not been described.<sup>19</sup> Becker's muscular dystrophy was originally diagnosed in our patient on the basis of his clinical presentation, creatine kinase levels, and skeletal-muscle pathological findings. However, as demonstrated in our patient, the diagnosis of a dystro-

phinopathy requires confirmation of dystrophin abnormalities by immunohistochemical means.

Several types of muscular dystrophy have been related to the disruption of different components of the link between the muscle cytoskeleton and the extracellular matrix.<sup>9,11-13,16,18</sup> It has been postulated that the structurally weakened sarcolemma ruptures under mechanical stress, allowing uncontrolled ingress of extracellular-fluid components, particularly calcium, which triggers several processes that eventually result in necrosis of muscle fibers. This common pathophysiologic mechanism may explain the histologic similarities found among biopsy specimens of skeletal muscle from patients with congenital muscular dystrophies, dystrophinopathies, and severe childhood autosomal recessive muscular dystrophy. Degenerative changes in cardiac-muscle fibers and foci of fibrosis have been described both in dystrophinopathies<sup>1,32</sup> and in Fukuyama-type congenital muscular dystrophy.<sup>33</sup> The findings in our patient were similar. Why no necrotic

fibers have been identified in cardiac muscle remains to be explained.

In dystrophinopathies, the cardiomyopathy appears to be unrelated to the course or severity of the skeletal myopathy. This observation is especially relevant to Becker's muscular dystrophy, in which severe myocardial involvement may be the presenting symptom.<sup>34-37</sup> At the other end of the spectrum is X-linked cardiomyopathy, which is linked to the dystrophin gene but presents without clinical muscle weakness.<sup>38-40</sup> The findings in some patients with X-linked cardiomyopathy suggest that deletions around exon 1 of the dystrophin gene may severely damage the function or expression of dystrophin in cardiac but not in skeletal muscle.<sup>39,40</sup> The differences in skeletal- and cardiac-muscle involvement in patients with dystrophinopathies may be explained by different underlying mutations. Interestingly, Michels et al.<sup>41</sup> did not find the common dystrophin-gene defect in 51 patients with idiopathic dilated cardiomyopathy, either familial or nonfamilial.

In our patient, dilated cardiomyopathy was related to adhalin deficiency. One might speculate that a defect in any of the dystrophin-associated proteins may present as a cardiomyopathy. Adhalin deficiency presents as an autosomal recessive condition,<sup>19</sup> and only sporadic cases have been reported in countries with a low consanguinity rate. It is also genetically heterogeneous, since the defective gene was mapped to the pericentromeric region of chromosome 13q<sup>20</sup> in the North African series, whereas the adhalin gene has been mapped to chromosome 17q12-21.33.<sup>25,26</sup> Conversely, Fukuyama-type congenital muscular dystrophy has been mapped to chromosome 9q31-33,<sup>13</sup> and merosin-negative congenital muscular dystrophy to chromosome 6q2.<sup>17</sup> A missense mutation in the adhalin gene may be the cause of adhalin deficiency in some families,<sup>26,27</sup> but different mechanisms are probably involved, since the linkage studies of the North African families indicate a locus on chromosome 13q.

Because dystrophinopathies and adhalin deficiency may be indistinguishable in terms of clinical presentation and pathological features of muscle, the diagnosis of Duchenne's or Becker's muscular dystrophy should be based on histochemically determined abnormalities of dystrophin. We propose that constituents of the dystrophin-glycoprotein complex and merosin be analyzed in all patients with the histologic findings suggestive of a dystrophinopathy and with normal results of muscle dystrophin analysis. Analysis of the dystrophin-glycoprotein complex should also be considered in patients with sporadic or familial non-X-linked dilated cardiomyopathy.

We are indebted to Masami Sunada and Sia Nizamuddin for expert technical assistance, and to Jo Ann Zaborowski for assistance in preparing the manuscript.

## REFERENCES

1. Farah MG, Evans EB, Vignos PJ Jr. Echocardiographic evaluation of left ventricular function in Duchenne's muscular dystrophy. *Am J Med* 1980;69:248-54.

2. D'Orsogna L, O'Shea JP, Miller G. Cardiomyopathy of Duchenne muscular dystrophy. *Pediatr Cardiol* 1988;9:205-13.
3. Vrints C, Mercelis R, Vanagt E, Snoeck J, Martin JJ. Cardiac manifestations of Becker-type muscular dystrophy. *Acta Cardiol* 1983;38:479-86.
4. de Visser M, de Voogt WG, la Riviere GV. The heart in Becker muscular dystrophy, facioscapulohumeral dystrophy, and Bethlem myopathy. *Muscle Nerve* 1992;15:591-6.
5. Hoffman EP, Brown RH Jr, Kunkel LM. Dystrophin: the protein product of the Duchenne muscular dystrophy locus. *Cell* 1987;51:919-28.
6. Specht LA, Kunkel LM. Duchenne and Becker muscular dystrophies. In: Rosenberg RN, Prusiner SB, DiMauro S, Barchi RL, Kunkel LM, eds. *The molecular and genetic basis of neurological disease*. Boston: Butterworth-Heinemann, 1993:613-31.
7. Koenig M, Monaco AP, Kunkel LM. The complete sequence of dystrophin predicts a rod-shaped cytoskeletal protein. *Cell* 1988;53:219-26.
8. Ervasti JM, Campbell KP. Membrane organization of the dystrophin-glycoprotein complex. *Cell* 1991;66:1121-31.
9. Campbell KP. Three muscular dystrophies: loss of cytoskeleton-extracellular matrix linkage. *Cell* 1995;80:675-9.
10. Ervasti JM, Campbell KP. A role for the dystrophin-glycoprotein complex as a transmembrane linker between laminin and actin. *J Cell Biol* 1993;122:809-23.
11. Ohlendieck K, Matsumura K, Ionasescu VV, et al. Duchenne muscular dystrophy: deficiency of dystrophin-associated proteins in the sarcolemma. *Neurology* 1993;43:795-800.
12. Matsumura K, Nonaka I, Tome FMS, et al. Mild deficiency of dystrophin-associated proteins in Becker muscular dystrophy patients having in-frame deletions in the rod domain of dystrophin. *Am J Hum Genet* 1993;53:409-16.
13. Toda T, Segawa M, Nomura Y, et al. Localization of a gene for Fukuyama type congenital muscular dystrophy to chromosome 9q31-33. *Nat Genet* 1993;5:283-6. [Erratum, *Nat Genet* 1994;7:113.]
14. Matsumura K, Nonaka I, Campbell KP. Abnormal expression of dystrophin-associated proteins in Fukuyama-type congenital muscular dystrophy. *Lancet* 1993;341:521-2.
15. Fukuyama Y, Osawa M, Suzuki H. Congenital progressive muscular dystrophy of the Fukuyama type: clinical, genetic and pathological considerations. *Brain Dev* 1981;3:1-29.
16. Tome FMS, Evangelista T, Leclerc A, et al. Congenital muscular dystrophy with merosin deficiency. *C R Acad Sci III* 1994;317:351-7.
17. Hillaire D, Leclerc A, Faure S, et al. Localization of merosin-negative congenital muscular dystrophy to chromosome 6q2 by homozygosity mapping. *Hum Mol Genet* 1994;3:1657-61.
18. Matsumura K, Tome FMS, Collin H, et al. Deficiency of the 50K dystrophin-associated glycoprotein in severe childhood autosomal recessive muscular dystrophy. *Nature* 1992;359:320-2.
19. Ben Hamida M, Fardeau M, Attia N. Severe childhood muscular dystrophy affecting both sexes and frequent in Tunisia. *Muscle Nerve* 1983;6:469-80.
20. Azibi K, Bachner L, Beckmann JS, et al. Severe childhood autosomal recessive muscular dystrophy with the deficiency of the 50 kDa dystrophin-associated glycoprotein maps to chromosome 13q12. *Hum Mol Genet* 1993;2:1423-8.
21. Fardeau M, Matsumura K, Tome FMS, et al. Deficiency of the 50 kDa dystrophin associated glycoprotein (adhalin) in severe autosomal recessive muscular dystrophies in children native from European countries. *C R Acad Sci III* 1993;316:799-804.
22. Zatz M, Matsumura K, Vainzof M, et al. Assessment of the 50-kDa dystrophin-associated glycoprotein in Brazilian patients with severe childhood autosomal recessive muscular dystrophy. *J Neurol Sci* 1994;123:122-8.
23. Mizuno Y, Noguchi S, Yamamoto H, et al. Selective defect of sarcoglycan complex in severe autosomal recessive muscular dystrophy muscle. *Biochem Biophys Res Commun* 1994;203:979-83.
24. Sewry CA, Samsome A, Matsumura K, Campbell KP, Dubowitz V. Deficiency of the 50 kDa dystrophin-associated glycoprotein and abnormal expression of utrophin in two south Asian cousins with variable expression of severe childhood autosomal recessive muscular dystrophy. *Neuromuscul Disord* 1994;4:121-9.
25. McNally EM, Selig S, Kunkel LM. Adhalin, the 50 kDa dystrophin associated protein, is not the locus for severe childhood autosomal recessive dystrophy (SCARMD). *Am J Hum Genet* 1994;55:Suppl:A135. abstract.
26. Roberds SL, Leturcq F, Allamand V, et al. Missense mutations in the adhalin gene linked to autosomal recessive muscular dystrophy. *Cell* 1994;78:625-33.
27. Piccolo F, Roberds SL, Jeanpierre M, et al. Primary adhalinopathy: a common cause of autosomal recessive muscular dystrophy of variable severity. *Nat Genet* 1995;10:243-5.
28. Ervasti JM, Ohlendieck K, Kahl SD, Gaver MG, Campbell KP. Deficiency of a glycoprotein component of the dystrophin complex in dystrophic muscle. *Nature* 1990;345:315-9.
29. Ohlendieck K, Campbell KP. Dystrophin-associated proteins are greatly reduced in skeletal muscle from mdx mice. *J Cell Biol* 1991;115:1685-94.

30. Engel AG. The muscle biopsy. In: Engel AG, Franzini-Armstrong C, eds. *Myology*. New York: McGraw-Hill, 1994:822-9.
31. Roberds SL, Ervasti JM, Anderson RD, et al. Disruption of the dystrophin-glycoprotein complex in the cardiomyopathic hamster. *J Biol Chem* 1993; 268:11496-9.
32. Palmucci L, Doriguzzi C, Mongini T, et al. Dilating cardiomyopathy as the expression of Xp21 Becker type muscular dystrophy. *J Neurol Sci* 1992; 111:218-21.
33. Nonaka I, Sugita H, Takada K, Kumagai K. Muscle histochemistry in congenital muscular dystrophy with central nervous system involvement. *Muscle Nerve* 1982;5:102-6.
34. Kuhn E, Fiehn W, Schroder JM, Assmus H, Wagner A. Early myocardial disease and cramping myalgia in Becker-type muscular dystrophy: a kindred. *Neurology* 1979;29:1144-9.
35. Borgeat A, Gay JJ, Sigwart U. Acute pulmonary edema as the inaugural symptom of Becker's muscular dystrophy in a 19-year-old patient. *Clin Cardiol* 1987;10:127-9.
36. Casazza F, Brambilla G, Salvato A, Morandi L, Gronda E, Bonacina E. Cardiac transplantation in Becker muscular dystrophy. *J Neurol* 1988;235:496-8.
37. Donofrio PD, Challa VR, Hackshaw BT, Mills SA, Cordell AR. Cardiac transplantation in a patient with muscular dystrophy and cardiomyopathy. *Arch Neurol* 1989;46:705-7.
38. Towbin JA, Hejtmancik JF, Brink P, et al. X-linked dilated cardiomyopathy: molecular genetic evidence of linkage to the Duchenne muscular dystrophy (dystrophin) gene at the Xp21 locus. *Circulation* 1993;87:1854-65.
39. Muntoni F, Cau M, Ganau A, et al. Deletion of the dystrophin muscle-promoter region associated with X-linked dilated cardiomyopathy. *N Engl J Med* 1993;329:921-5.
40. Yoshida K, Ikeda S, Nakamura A, et al. Molecular analysis of the Duchenne muscular dystrophy gene in patients with Becker muscular dystrophy presenting with dilated cardiomyopathy. *Muscle Nerve* 1993;16:1161-6.
41. Michels VV, Pastores GM, Moll PP, et al. Dystrophin analysis in idiopathic dilated cardiomyopathy. *J Med Genet* 1993;30:955-7.

#### IMAGES IN CLINICAL MEDICINE

Images in Clinical Medicine, a weekly *Journal* feature, presents clinically important visual images, emphasizing those a doctor might encounter in an average day at the office, the emergency department, or the hospital. If you have an original unpublished, high-quality color or black-and-white photograph representing such a typical image that you would like considered for publication, send it with a descriptive legend to Kim Eagle, M.D., University of Michigan Medical Center, Division of Cardiology, 3910 Taubman Center, Box 0366, 1500 East Medical Center Drive, Ann Arbor, MI 48109. For details about the size and labeling of the photographs, the requirements for the legend, and authorship, please contact Dr. Eagle at 313-936-5275 (phone) or 313-936-5256 (fax), or the *New England Journal of Medicine* at [images@edit.nejm.org](mailto:images@edit.nejm.org) (e-mail).

**CORRECTION**

**Deficiency of a Dystrophin-Associated Glycoprotein (Adhalin) in a Patient with Muscular Dystrophy and Cardiomyopathy**

Deficiency of a Dystrophin-Associated Glycoprotein (Adhalin) in a Patient with Muscular Dystrophy and Cardiomyopathy . On page 362, the second author's name and degree should have read, "Yoshihide Sunada, M.D., Ph.D." and the second sentence of the support paragraph at the bottom of the page should have read, "Dr. Campbell is an Investigator of the Howard Hughes *Medical* Institute." On page 364, in the legend to Figure 2, the last sentence should have read, "The scale bar represents 50  $\mu\text{m}$ ," not "500  $\mu\text{m}$ ," as printed.