

NOTICES

Notices submitted for publication should contain a mailing address and phone number of a contact person or department. We regret we are unable to publish all notices received. Notices also appear on the Journal's Web site (<http://www.nejm.org>). The listings can be viewed in their entirety or searched by location, month, or key word.

CALL FOR SUBMISSIONS

The Volvo Company is accepting submissions for its "Awards for Low Back Pain Research 2002," which support research in low back pain in the areas of clinical studies, bioengineering, and other basic science areas. Deadline for submission is Dec. 3.

Contact Dr. Alf Nachemson, Dept. of Orthopaedics, Göteborg Univ., Sahlgrenska Univ. Hospital, S-413 45 Göteborg, Sweden; or call (46) 31 342-2630.

16TH INTERNATIONAL WORKSHOP ON THERAPEUTIC ENDOSCOPY

The workshop will be held in Hong Kong, Dec. 4–6. It is sponsored by the Hong Kong Society of Digestive Endoscopy.

Contact Claudia Mak, HKSD, Endoscopy Ctr., Prince of Wales Hosp., Shatin, N.T., Hong Kong; or call (852) 2632-2233; or fax (852) 2635-0075; or e-mail info@hksde.org.

CALL FOR APPLICATIONS

The University Center for Human Values at Princeton University is accepting applications for its "Laurance S. Rockefeller Visiting Fellowships," which allow recipients to spend a year in residence at Princeton writing about ethics and human values. Deadline for submission is Dec. 5.

Contact Amy Gutmann, UCHV, 304 Louis Marx Hall, Princeton Univ., Princeton, NJ 08544-1006; or call (609) 258-4798; or e-mail values@princeton.edu; or see <http://www.princeton.edu/values>.

23RD ANNUAL NEUROLOGY FOR THE NON-NEUROLOGIST

The conference will be held in Chicago, Dec. 5–7.

Contact Judy Robins, Dept. of Neurological Sciences, Rush–Presbyterian–St. Luke's Medical Ctr., 1725 W. Harrison St., Ste. 1106, Chicago, IL 60612; or call (312) 563-2518; or fax (312) 942-2380; or e-mail judy_robins@rush.edu.

ADVANCED DIAGNOSIS OF NECK & BACK PAIN

The meeting will be held in Orlando, Fla., Dec. 5–8. It is sponsored by the American Back Society.

Contact ABS, 2647 International Blvd., Ste. 401, Oakland, CA 94601; or call (510) 536-9929; or e-mail info@americanbacksoc.org; or fax (510) 536-1812.

CONTROL OF MUSCULOSKELETAL DISORDERS IN THE WORKPLACE: GENERAL PRINCIPLES AND CASE STUDIES

The course will be offered in Millbrae, Calif., Dec. 13 and 14. It is jointly sponsored by the University of Michigan and the University of California, Berkeley.

Contact A-Niesha Sapp, UC Berkeley, 2223 Fulton St., 2nd Fl., Berkeley, CA 94720-5120; or see <http://socrates.berkeley.edu/~cochec>; or call (510) 643-7277.

CORRECTION

Cardiovascular Complications of Cocaine Use (August 2, 2001;345:351-8). There were errors in Figure 1, on page 352. The corrected figure is reprinted with its legend below.

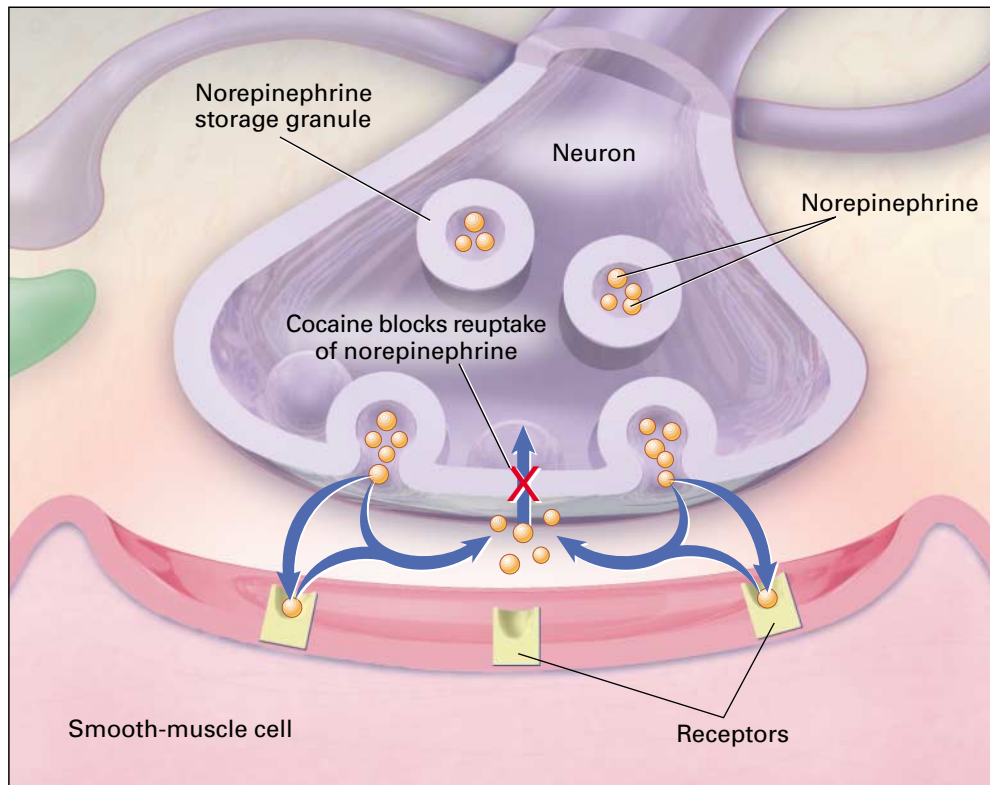


Figure 1. The Mechanism by Which Cocaine Alters Sympathetic Tone.

Cocaine blocks the reuptake of norepinephrine by the neuron (red X), resulting in excess amounts of this neurotransmitter at receptor sites on the effector cell.