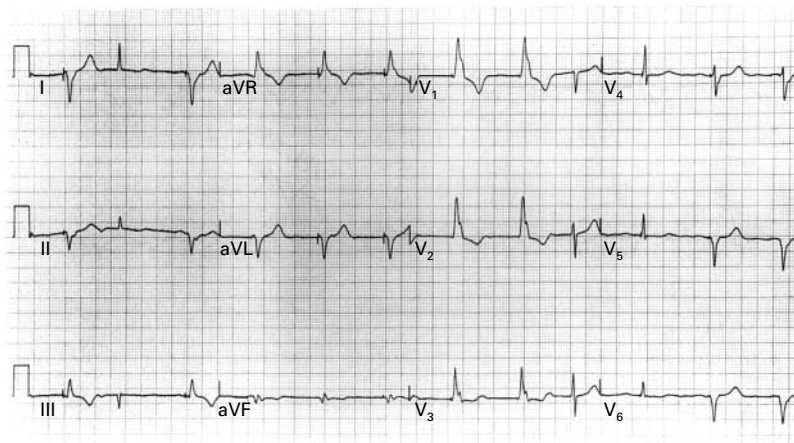




## Images in Clinical Medicine



A



B

### *A Medical Mystery*

A 76-year-old man with sinus node disease who was evaluated after an episode of syncope received a single-chamber pacemaker through the left subclavian approach. A chest film (Panel A) and electrocardiogram (Panel B) were obtained six weeks later. What are the diagnosis and the correct approach to treatment?

J. WARREN HARTHORNE, M.D.  
IGOR PALACIOS, M.D.  
*Massachusetts General Hospital  
Boston, MA 02114*

*Editor's note:* We invite our readers to offer their opinions by e-mail ([mystery@nejm.org](mailto:mystery@nejm.org)) or fax (617-739-9864). We will not be able to acknowledge the receipt of responses. We will publish the diagnosis in the Correspondence section of the August 1, 2002, issue. All replies must be received by June 27, 2002.

Copyright © 2002 Massachusetts Medical Society.