

**ASH 2002 REVIEW**

The abstract review seminar will be held in St. Louis on Jan. 18. Contact Washington University School of Medicine, CME, Campus Box 8063, 660 S. Euclid Ave., St. Louis, MO 63110; or call (800) 325-9862 (national) or (314) 362-6891 (Missouri); or e-mail [cme@msnotes.wustl.edu](mailto:cme@msnotes.wustl.edu); or see <http://cme.wustl.edu>.

**INTERNATIONAL CONGRESS XVI ON ENDOVASCULAR INTERVENTIONS**

The congress will be held in Scottsdale, Ariz., Feb. 9–13. It is sponsored by the Arizona Heart Institute Foundation.

Contact International Congress XVI, 2632 North 20th St., Phoenix, AZ 85006; or e-mail [info@endovascularcongress.org](mailto:info@endovascularcongress.org); or call (602) 604-5030; or see <http://www.endovascularcongress.org>; or fax (602) 604-5020.

**HIGH-IMPACT DECISION MAKING: OPTIMIZING THE VALUE OF DRUG DEVELOPMENT PORTFOLIOS**

The conference will be held in Philadelphia, Feb. 11–13. It is part of “The Cross-Functional Performance Series: Practical Solutions for R&D Excellence” and is jointly presented by Pitiglio Rabin Todd & McGrath, Tufts Center for the Study of Drug Development, and The Management Roundtable.

Contact Management Roundtable, 92 Crescent St., Waltham, MA 02453; or call (800) 338-2223 (national) or (781) 891-8080 (Massachusetts); or e-mail [info@pharmcentric.com](mailto:info@pharmcentric.com); or fax (781) 398-1889; or see <http://www.pharmcentric.com>.

**POSTGRADUATE COURSE IN CLINICAL PHARMACOLOGY, DEVELOPMENT, AND REGULATION**

The course will be offered in Boston, Feb. 18–21. It is jointly sponsored by Tufts University School of Medicine, Tufts Center for the Study of Drug Development, and the Drug Information Association.

Contact Ellie Cleary, Tufts Center for the Study of Drug Development, 192 South St., Suite 550, Boston, MA 02111; or call (617) 636-2173; or fax (617) 636-2425; or e-mail [eleanor.cleary@tufts.edu](mailto:eleanor.cleary@tufts.edu); or see <http://csdd.tufts.edu>.

**THE SOCIETY FOR PEDIATRIC RADIOLOGY**

A postgraduate course will be held in San Francisco, May 6 and 7. The “46th Annual Meeting” will be held in San Francisco, May 7–10.

Contact Shelley Schneider, 4550 Post Oak Place, Suite 342, Houston, TX 77027; or e-mail [SPR@meetingmanagers.com](mailto:SPR@meetingmanagers.com); or call (713) 965-0566; or see <http://www.pedrad.org>; or fax (713) 960-0488.

**16TH ANNUAL PRACTICING PHYSICIAN'S APPROACH TO THE DIFFICULT HEADACHE PATIENT**

The course will be offered in Rancho Mirage, Calif., Feb. 11–15.

Contact Diamond Headache Clinic Research and Educational Foundation, 467 West Deming Pl., Chicago, IL 60614; or call (877) 706-6363 (national) or (773) 388-6363 (Illinois); or fax (773) 477-9712.

**INTERNATIONAL MEETING MANAGERS**

The following courses will be offered: “19th Annual Masters Radiology Conference” (Big Island, Hawaii, Feb. 15–20); “Abdominal Radiology Postgraduate Course 2003” (Cancun, Mexico, Feb. 16–21); and “33rd Annual Conference on Chest Disease” (Los Angeles, April 12–15).

Contact Lynne K. Tiras, International Meeting Managers, 4550 Post Oak Place, Suite 342, Houston, TX 77027; or call (713) 965-0566; or fax (713) 960-0488; or e-mail [imm@meetingmanagers.com](mailto:imm@meetingmanagers.com).

**PEDIATRICS CONFERENCES**

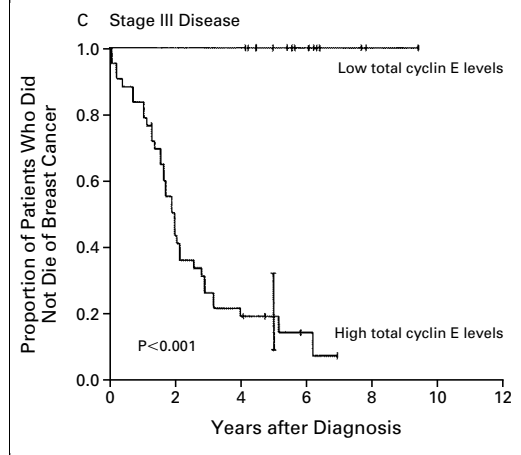
The following conferences will be offered: “Pediatric Potpourri: State of the Art 2003” (Maui, Hawaii, Feb. 15–21); “Pediatrics in the Islands: Clinical Pearls 2003” (Maui, Hawaii, June 29–July 5); and “Aloha Update: Pediatrics 2003” (Kauai, Hawaii, Oct. 11–17). The conferences are jointly presented by the University Children's Medical Group and the American Academy of Pediatrics.

Contact University Children's Medical Group, 6430 Sunset Blvd., Suite 600, Los Angeles, CA 90028-7900; or call (800) 354-3263 (national) or (323) 669-2305 (California); or e-mail [pdinsmore@chla.usc.edu](mailto:pdinsmore@chla.usc.edu); or see <http://www.ucmg.org>.

**CORRECTIONS**

Availability of Neonatal Intensive Care and Neonatal Mortality (December 5, 2002;347:1893-5). In some copies of the *Journal*, the first sentence of the editorialist's reply on page 1895 was obscured. The sentence should have read “The study by Goodman et al. and the letters in response to their report illustrate the challenges in reconciling the day-to-day experiences of clinicians with evidence about the performance of the health care system viewed at a more ‘macro’ level.”

Cyclin E and Survival in Patients with Breast Cancer (November 14, 2002;347:1566-75). On page 1572, the curves in Figure 3C were incorrect. The corrected Panel C appears below.

**THE JOURNAL'S WEB AND E-MAIL ADDRESSES:**

For letters to the Editor: <http://secure.nejm.org/letters>

For information about the status of a submitted manuscript: <http://www.nejm.org/hfa/papertrail>

To submit a meeting notice: [meetingnotices@nejm.org](mailto:meetingnotices@nejm.org)

The *Journal's* Web pages: <http://www.nejm.org>