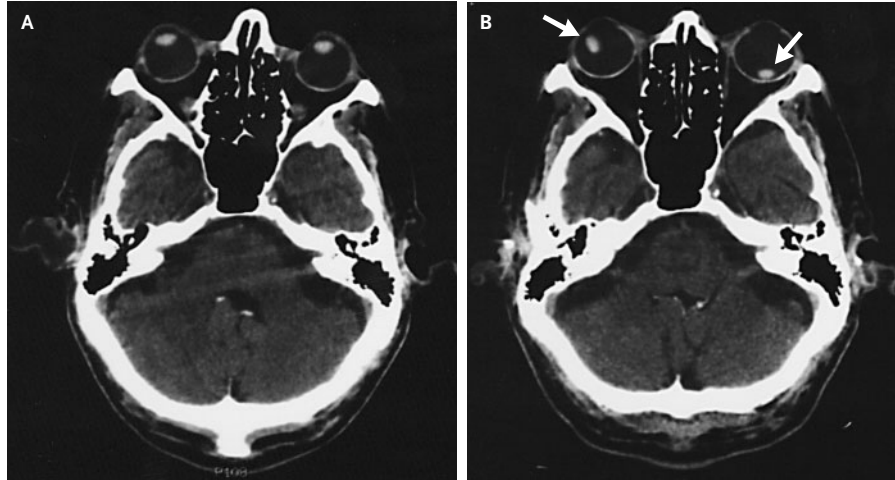


## Dislocation of the Lenses



Sameer K. Mathur, M.D., Ph.D.  
Loyola University Medical Center  
Maywood, IL 60153

Daniel Grodinsky, M.D.  
Hines Veterans Affairs Hospital  
Hines, IL 60141

**A** 60-YEAR-OLD MAN WITH A HISTORY OF FREQUENT FALLS PRESENTED after a fall that resulted in minor trauma to the head. A review of systems was remarkable only for the recent onset of intermittent blurry vision, which the patient blamed for his current fall. A computed tomographic (CT) scan of the head that had been obtained three months earlier was available (Panel A). Another CT scan of the head was obtained on presentation and showed bilateral lens dislocations (Panel B, arrows). The lens dislocations were presumably due to repeated trauma and to weakened zonular attachment of the lens. The weakened zonular attachment was probably due to the pseudoexfoliation syndrome.

Copyright © 2004 Massachusetts Medical Society.