

CORRESPONDENCE

- 943 Early Malignant Progression of Hereditary Medullary Thyroid Cancer
- 943 Valsartan, Captopril, or Both in Myocardial Infarction
- 945 The Toxicology of Mercury
- 947 Gene Silencing
- 948 Congenital Pulmonary Lymphangiectasia
- 949 Transient Improvement of Aphasia with Zolpidem
- 950 Breakthrough Zygomycosis after Voriconazole Treatment in Recipients of Hematopoietic Stem-Cell Transplants

BOOK REVIEWS

- 953 Pediatric Hospital Medicine: Textbook of Inpatient Management
- 954 Pediatric Endocrinology: A Practical Clinical Guide
- 955 Disorders of Hair Growth: Diagnosis and Treatment

CONTINUING MEDICAL EDUCATION

- 957 Cellulitis
- 958 Relation of Serial Changes in Childhood Body-Mass Index to Impaired Glucose Tolerance in Young Adulthood
- 959 Pulmonary Hypertension as a Risk Factor for Death in Patients with Sickle Cell Disease

POSTING PRESENTATIONS AT MEDICAL MEETINGS ON THE INTERNET

Posting an audio recording of an oral presentation at a medical meeting on the Internet, with selected slides from the presentation, will not be considered prior publication. This will allow students and physicians who are unable to attend the meeting to hear the presentation and view the slides. If there are any questions about this policy, authors should feel free to call the *Journal's* Editorial Offices.

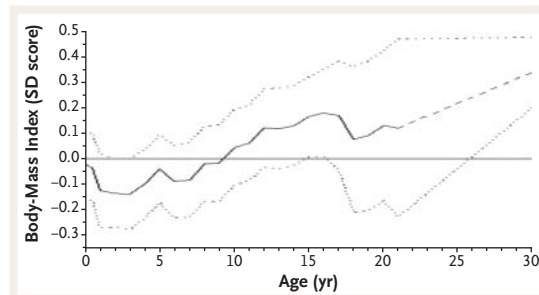


This Week in the Journal

FEBRUARY 26, 2004

ORIGINAL ARTICLE

Changes in Childhood Body-Mass Index and Impaired Glucose Tolerance in Young Adulthood



This study from Delhi, India, assessed 1442 men and women 26 to 32 years of age who had been evaluated at birth and throughout childhood in a prospective, population-based study. Subjects who currently had impaired glucose

tolerance or diabetes typically had a low body-mass index up to the age of two years, followed by an early, accelerated increase in body-mass index.

If these observations are confirmed, it may be possible to delay or prevent diabetes in early childhood by protecting infant growth and preventing children from crossing into higher categories of body-mass index.

SEE P. 865; PERSPECTIVE, P. 855

ORIGINAL ARTICLE

Infliximab Maintenance Therapy for Fistulizing Crohn's Disease

Infliximab, a monoclonal antibody against tumor necrosis factor, reduces disease activity in patients with Crohn's disease. In this study of patients with fistulizing Crohn's disease who had a response to infliximab, continued infusions every 8 weeks were associated with a longer duration of response than were placebo infusions. After 54 weeks of treatment, 36 percent of patients in the infliximab group and 19 percent of those in the placebo group had no draining fistulas.

Maintenance treatment with infliximab reduced the likelihood of relapse in patients with fistulizing Crohn's disease.

SEE P. 876; EDITORIAL, P. 934

ORIGINAL ARTICLE

Pulmonary Hypertension in Sickle Cell Disease

This study showed that sickle cell disease is complicated by pulmonary hypertension in about one third of adult patients. Even more important, patients with pulmonary hypertension have a much higher mortality rate than those without pulmonary hypertension.

Pulmonary hypertension, which can be diagnosed noninvasively with Doppler echocardiography, is a finding that indicates a poor prognosis for patients with sickle cell disease. Trials of interventions aimed at mitigating pulmonary hypertension are urgently needed.

SEE P. 886; PERSPECTIVE, P. 857

ORIGINAL ARTICLE

Intranasal Influenza Vaccine and Bell's Palsy

After the introduction of an intranasal influenza vaccine in Switzerland, there were several dozen reports of Bell's palsy in vaccine recipients. In this careful study, even with conservative assumptions, the risk of Bell's palsy appeared to be increased by a factor of 19 among those who received the intranasal vaccine. The risk of Bell's palsy was not increased after parenteral influenza vaccination.

This formulation of an inactivated intranasal influenza vaccine was available only in Switzerland and has since been withdrawn from the market. This report documents a low-frequency adverse effect that could not be detected in prelicensure trials.

SEE P. 896; PERSPECTIVE, P. 860

CLINICAL PRACTICE

Cellulitis

An otherwise healthy 40-year-old man felt feverish and noted pain and redness over the dorsum of his foot. Tender edema and erythema extended up the pretibial area. Fissures were present between the toes. What diagnostic procedures and treatment are indicated?

SEE P. 904

HEALTH POLICY REPORT

Britain's National Health Service Revisited

This Health Policy Report reviews recent policy changes in Britain's National Health Service (NHS). The government plans to increase spending on health to 8 percent of the gross domestic product, which is the average level of spending across the European Union. The report discusses the implications of new initiatives to decentralize management of the NHS, improve the quality of health care, reduce patients' waiting times, and make the NHS more consumer-oriented.

SEE P. 937

MECHANISMS OF DISEASE

Activation of the T-Cell Oncogene *LMO2* after Gene Therapy for X-Linked SCID

Gene therapy, in which a retrovirus was used to carry the relevant gene (*IL2R γ c*) into a patient's hematopoietic stem cells, was used to treat 10 boys with X-linked severe combined immunodeficiency (SCID). A syndrome resembling T-cell leukemia developed in two of the boys. In both boys — and a third in whom leukemia has not developed — the retrovirus integrated into the same genomic site, the locus of *LMO2*, which is involved in childhood lymphocytic leukemia. This article reviews the molecular biology of these events and discusses their implications for the future of gene therapy.

SEE P. 913

CASE RECORDS OF THE MASSACHUSETTS GENERAL HOSPITAL

A Woman with Multiple Pigmented Lesions and a History of Melanoma

A 48-year-old woman with multiple pigmented skin lesions and a personal and family history of melanoma had been followed since the age of 32 in a clinic specializing in pigmented lesions. This Case Record reviews the classifications of familial mole and melanoma syndromes and discusses the role of genetic testing and the approach to management for this patient and her family.

SEE P. 924

