

CORRESPONDENCE

- 91 Talking about Death with Dying Children
- 92 Risk Stratification for Ablation in Asymptomatic Wolff–Parkinson–White Syndrome
- 93 Attracting Students to Primary Care
- 95 Prosthetic-Joint Infections
- 97 Production of Penicillin
- 97 A Bitter Tale
- 98 Autoantibodies against Cardiac Troponins

BOOK REVIEWS

- 101 Men, Microbes and Medical Microbiologists: A Concise Pictorial History of Medical Microbiology and Infectious Diseases
- 102 Women at the Front: Hospital Workers in Civil War America
- 103 History of Burns
- 103 Burn Unit: Saving Lives after the Flames

CONTINUING MEDICAL EDUCATION

- 109 C-Reactive Protein Levels and Outcomes after Statin Therapy
- 110 Cardiovascular Risk and Body-Fat Abnormalities in HIV-Infected Adults
- 111 Neurologic and Developmental Disability at Six Years of Age after Extremely Preterm Birth

**Next Week
in the Journal**

JANUARY 13, 2005

Controlling Malaria by 2015

Jeffrey Sachs

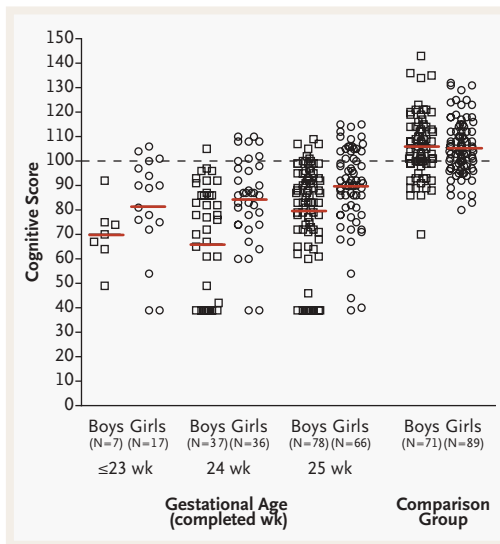


This Week in the Journal

JANUARY 6, 2005

ORIGINAL ARTICLE

Outcomes of Extremely Preterm Children at Six Years



Among a cohort of children born at 25 weeks or fewer of gestation in the United Kingdom and Ireland in 1995 and evaluated at a median age of six years and four months, cognitive and neurologic impairment was common. An earlier diagnosis of severe disability at 30 months of age was highly predictive of moderate-to-severe disability at early school age.

Cognitive and neurologic deficits are frequent in extremely preterm children.

SEE P. 9; EDITORIAL, P. 71;

CME, P. 111

ORIGINAL ARTICLE

C-Reactive Protein Levels after Statin Therapy

Statin therapy lowers not only low-density lipoprotein (LDL) cholesterol levels, but also levels of C-reactive protein (CRP), a marker of inflammation. This study examined the independent effects of decreasing LDL cholesterol and CRP levels on subsequent coronary risk in patients with acute coronary syndromes who were receiving pravastatin or atorvastatin. Lowering CRP levels reduced coronary risk irrespective of the extent of LDL cholesterol lowering. Patients with the lowest risk had the lowest levels of both LDL cholesterol and CRP after 30 days of statin therapy.

Along with those of Nissen et al., these results demonstrate that the levels of both cholesterol and CRP should be monitored in patients treated with statins.

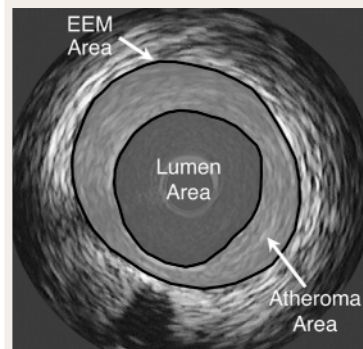
SEE P. 20; EDITORIAL, P. 73;
CME, P. 109

ORIGINAL ARTICLE

Statin Therapy and the Progression of Coronary Disease

Statins have pleiotropic effects, reducing not only low-density lipoprotein cholesterol levels, but also the levels of C-reactive protein (CRP), an inflammatory marker. This study found that the effects of statin therapy on the progression or regression of coronary atherosclerosis are related to both their lipid-lowering effect and their CRP-lowering effect. These results provide additional support for the concept that part of the beneficial effect of statins is due to the lowering of CRP.

SEE P. 29; EDITORIAL, P. 73



ORIGINAL ARTICLE

Bacteremia among Children Admitted to a Hospital in Kenya

At a rural district hospital in Kenya, nearly 13 percent of infants were found to have bacteremia on admission, as were nearly 6 percent of all children who were 60 or more days of age. Of all the deaths in the hospital, 26 percent were among infants and children with community-acquired bacteremia.

This large, prospective study in infants and children in sub-Saharan Africa shows that bacteremia is a major cause of death. The use of existing vaccines against bacterial pathogens could prevent many of these fatal infections.

SEE P. 39; EDITORIAL, P. 75



MEDICAL PROGRESS

Cardiovascular Risk and Body-Fat Abnormalities in HIV-Infected Adults

Metabolic complications such as dyslipidemia, insulin resistance, and altered fat distribution (loss of subcutaneous fat and relatively increased central fat) are common in adults infected with the human immunodeficiency virus who are receiving highly active antiretroviral therapy and may increase their risk of cardiovascular disease. This review discusses progress in understanding the pathogenetic mechanisms and treatment strategies for addressing cardiovascular risk in this population.

SEE P. 48; CME, P. 110

CLINICAL PROBLEM-SOLVING

Unfashionably Late

An 18-year-old man presented with shortness of breath, a cough that was productive of clear sputum, and a two-week history of pleuritic chest pain. He also reported night sweats, fever, and fatigue, but no hemoptysis, weight loss, recent travel, or new environmental exposures.

SEE P. 64

CLINICAL IMPLICATIONS OF BASIC RESEARCH

Stroke and Acidosis

An acid-sensing ion channel is a key mediator of neuronal calcium influx in an animal model of stroke.

SEE P. 85

HEALTH POLICY REPORT

Specialty Hospitals

This report discusses the heated controversy over the proliferation of physician-owned specialty hospitals, such as cardiac and orthopedic hospitals. The owners of general hospitals argue that specialty hospitals provide services for the most profitable cases and thus have an unfair competitive advantage. Late in 2003, Congress declared an 18-month moratorium on the opening of new specialty hospitals, and it will soon decide whether the moratorium should be lifted or made permanent.

SEE P. 78