

**CORRESPONDENCE**

- 1923 Myocardial Stunning  
Due to Sudden Emotional  
Stress
- 1925 Vascular Risk Factors  
and Diabetic Neuropathy
- 1927 Health Care in the 21st Century
- 1928 Avian Influenza and Pandemics
- 1929 Treatment for Cutaneous  
Leishmaniasis
- 1929 Cardiac Sarcoma 14 Years  
after Treatment for Pleural  
Mesothelioma
- 1930 Osteoporosis, Teriparatide,  
and Dosing of Calcium  
and Vitamin D

**BOOK REVIEWS**

- 1932 Immunologic Disorders  
in Infants and Children
- 1933 Neonatal Immunity
- 1933 The Innate Immune  
Response to Infection

**CONTINUING MEDICAL EDUCATION**

- 1937 Amiodarone versus Sotalol  
for Atrial Fibrillation
- 1938 Persistent Low Back Pain
- 1939 Screening for the Lynch  
Syndrome (Hereditary  
Nonpolyposis Colorectal  
Cancer)

**Next Week  
in the Journal**

MAY 12, 2005

**The Language of Medicine**

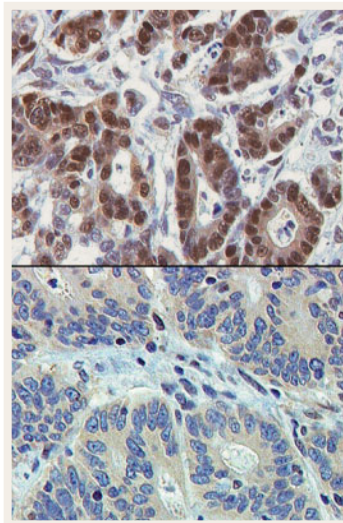


# This Week in the Journal

MAY 5, 2005

**ORIGINAL ARTICLE**

## Screening for the Lynch Syndrome



The Lynch syndrome is hereditary non-polyposis in patients with colorectal cancer. This diagnosis has implications for treatment and for the risk of cancer among family members. In this study of 1066 patients with newly diagnosed colorectal cancer, 23 patients and 52 family members were positive for Lynch syndrome mutations. Had the criteria of age and the presence or absence of a family history been used to select patients for genetic screening, many mutations would have remained undetected.

Routine screening for the Lynch syndrome among patients with colorectal cancer may be beneficial to patients and their family members.

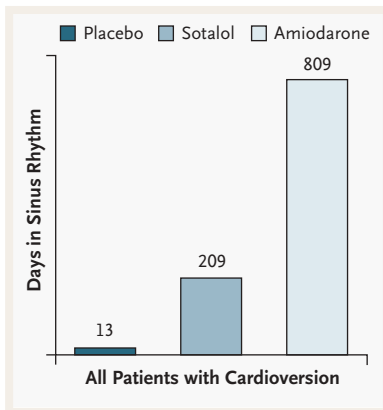
SEE P. 1851; EDITORIAL, P. 1920; CME, P. 1939

## ORIGINAL ARTICLE

**Amiodarone versus Sotalol for Atrial Fibrillation**

In patients with persistent atrial fibrillation, amiodarone and sotalol were equally efficacious for conversion of the arrhythmia to sinus rhythm. However, amiodarone was clearly superior to sotalol for maintenance of sinus rhythm. The results establish amiodarone as the drug of choice for the management of atrial fibrillation.

SEE P. 1861; CME, P. 1937



## ORIGINAL ARTICLE

**Detection of Acute Infections in HIV Testing**

Standard antibody screening does not detect recent infection in persons who have viremia but are antibody-negative. In North Carolina, nucleic acid amplification testing for HIV was added to the screening of 109,250 subjects who were tested during one year. A total of 23 acutely infected subjects were identified only with the use of this additional test.

The addition of nucleic acid amplification to standard screening tests for HIV improved the detection of cases by 3.9 percent and also detected the patients with acute infections at the most contagious stage.

SEE P. 1873

## BRIEF REPORT

**Nephrogenic Syndrome of Inappropriate Antidiuresis**

The syndrome of inappropriate antidiuretic hormone secretion (SIADH) is a common cause of hyponatremia. This article describes two infants with a clinical picture of SIADH but with undetectable levels of arginine vasopressin. Each had a gain-of-function mutation in the V2 vasopressin receptor that changed arginine to cysteine or leucine in codon 137, causing constitutive activation of the receptor. The authors term this condition "nephrogenic syndrome of inappropriate antidiuresis."

SEE P. 1884; PERSPECTIVE, P. 1847

## CLINICAL PRACTICE

**Persistent Low Back Pain**

A 49-year-old maintenance worker with a history of depression and previous reports of minor back pain is seen during four months of continuing low back pain. He has remained out of work for fear of worsening the injury. Magnetic resonance imaging two weeks after the onset of pain showed only mild degenerative changes in the lumbar region without spinal stenosis or disk collapse or extrusion. How should this patient be evaluated and treated?

SEE P. 1891; CME, P. 1938

## MEDICAL PROGRESS

**Psoriasis**

Research to define the pathogenesis of psoriasis, a common inflammatory skin disorder, has considerably increased the general understanding of T-cell-mediated autoimmune disorders. Psoriasis is increasingly a prime target for new pathogenesis-oriented biologic therapies. The authors of this article review genetic, clinical, and pathogenic aspects of psoriasis and discuss their implications for new therapies.

SEE P. 1899



## CLINICAL PROBLEM-SOLVING

**Clear as Mud**

A previously healthy 17-year-old boy presented to his primary care physician, reporting four days of low back pain, a temperature as high as 40°C, headache, diffuse myalgias, and vomiting. He lived in the central Midwest and was about to begin his senior year in high school.

SEE P. 1914