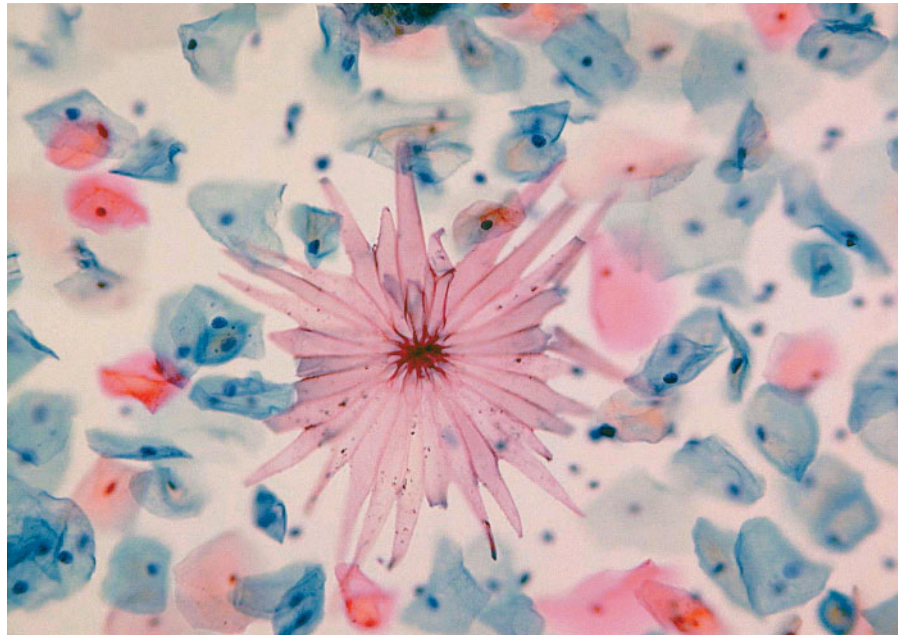


Arrowwood Contaminant in Pap Smear



Tunde A. Farkas, M.D.

University of Pennsylvania
School of Medicine
Philadelphia, PA 19104

THIS HARMLESS ARROWWOOD CONTAMINANT WAS SEEN IN A ROUTINE cervical smear of a young woman. Arrowwood (*Viburnum dentatum*) grows in the eastern and midwestern regions of the United States and Canada. The stellate structure has thick, transparent walls and stains a pinkish-gold color with the Papanicolaou smear. It is very fragile and is seen intact infrequently. Plant hairs (trichomes) originate from many different trees and are sometimes seen in Papanicolaou smears during the spring and summer.

Copyright © 2005 Massachusetts Medical Society.