



This Week in the Journal

FEBRUARY 24, 2005

CORRESPONDENCE

- 833 Preventing Microalbuminuria in Type 2 Diabetes
- 835 Telmisartan vs. Enalapril in Type 2 Diabetes
- 837 Prostanoid DP Receptor Variants and Asthma
- 838 Medical Research and the News Media
- 839 Neonatal Brain Injury
- 840 Multiple Myeloma
- 841 Getting the Lead Out
- 843 APL during Gefitinib Treatment for Non-Small-Cell Lung Cancer

BOOK REVIEWS

- 844 Obstetrics and Gynecology: A History and Iconography
- 845 The Brain Takes Shape: An Early History
- 846 Microbial Biofilms
- 847 Sleep Medicine in Clinical Practice

CONTINUING MEDICAL EDUCATION

- 849 Rosacea
- 850 Chronic Lymphocytic Leukemia
- 851 Recombinant Activated Factor VII for Acute Intracerebral Hemorrhage

Next Week in the Journal

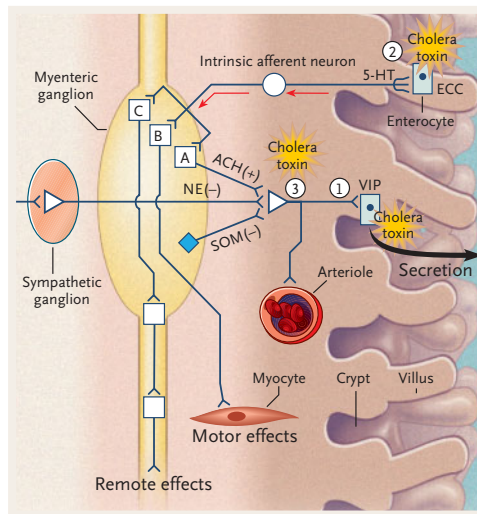
MARCH 3, 2005

Turf Wars in Cardiac Care

Robert Huckman and Gary Pisano

ORIGINAL ARTICLE

Effectiveness of Oral Vaccination against Cholera



In Beira, Mozambique, a mass-immunization program was undertaken in 2003 and 2004 with two doses of an orally administered recombinant cholera toxin-B subunit, killed whole-cell vaccine. During an outbreak of cholera in 2004, a study of 43 case subjects with cholera and 172 matched controls showed that vaccination was associated with 78 percent protection against cholera.

This immunization program was conducted in an area

where cholera is endemic and where the prevalence of HIV infection approaches 30 percent of the population. The results are encouraging, although the duration of protection remains uncertain.

SEE P. 757; EDITORIAL, P. 827

ORIGINAL ARTICLE

Primary Human Herpesvirus 6 Infection

In this study of serial saliva specimens from 277 children, 40 percent were infected with human herpesvirus 6 (HHV-6) by 12 months of age and 77 percent were infected by 2 years of age. Nearly all primary infections were symptomatic, with almost 40 percent leading to clinic visits for symptoms such as fever, fussiness, and diarrhea. Unlike prior studies based on visits to emergency rooms, this prospective study of infants showed no association of HHV-6 infection with seizures. Roseola was present in 23 percent of the primary infections.

SEE P. 768; PERSPECTIVE, P. 753



ORIGINAL ARTICLE

Recombinant Activated Factor VII for Acute Intracerebral Hemorrhage

In this randomized trial, treatment of patients with intracerebral hemorrhage with recombinant activated factor VII (rFVIIa) within four hours after the onset of bleeding reduced the growth of the hematoma and the rates of disability and mortality (90-day mortality was 18 percent with rFVIIa and 29 percent with placebo). Serious thromboembolic adverse events were more common among patients treated with rFVIIa than among those who received placebo.

Despite the higher rates of such complications, early treatment with rFVIIa improved functional outcomes and survival among patients with intracerebral hemorrhage.

SEE P. 777; EDITORIAL, P. 828; CME, P. 851

BRIEF REPORT

Emergence of Drug Resistance in Gefitinib-Responsive Non-Small-Cell Lung Cancer

A non-small-cell lung cancer that was highly responsive to gefitinib contained a mutation in the epidermal growth factor receptor (*EGFR*) gene that increases susceptibility of the tumor to gefitinib. After two years of remission, the disease relapsed. A second biopsy of the tumor revealed a new mutation in the gene that negated the effects of gefitinib.

Effective treatment with gefitinib may not prevent repopulation of non-small-cell lung cancer by cells with an activating mutation of *EGFR*. In this case, the tumor cells were resistant to the drug. The hypothetical repopulating precursors may be better targets of curative treatment than the large population of easily visible tumor cells.

SEE P. 786; EDITORIAL, P. 830

CLINICAL PRACTICE

Rosacea

A 47-year-old white woman reports facial redness and flushing. Her eyes are itchy and irritated. She thinks she may have rosacea and is worried that she will have a "whiskey nose." On examination, multiple erythematous papules, pustules, and telangiectasias are observed on a background of erythema of the central portion of her face. How should her case be managed?

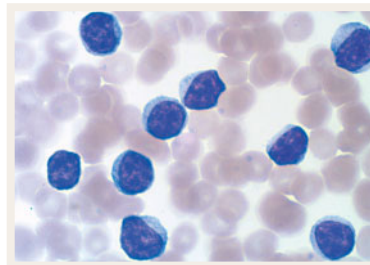
SEE P. 793; CME, P. 849

MECHANISMS OF DISEASE

Chronic Lymphocytic Leukemia

Our concept of the pathogenesis of chronic lymphocytic leukemia has undergone remarkable changes during the past decade. This review addresses the latest ideas concerning the origin of this common form of leukemia and discusses how molecular investigations are beginning to change the management of the disease.

SEE P. 804; CME, P. 850



CASE RECORDS OF THE

MASSACHUSETTS GENERAL HOSPITAL

A Man with Esophageal Cancer and Nausea, Vomiting, and Intractable Hiccups

A 58-year-old man with esophageal cancer had nausea, spontaneous vomiting, and intractable hiccups. The discussants review the role of palliative care in the management of distressing symptoms in patients with cancer, emphasizing the importance of the differential diagnosis in identifying the cause and selecting appropriate treatment for each symptom.

SEE P. 817