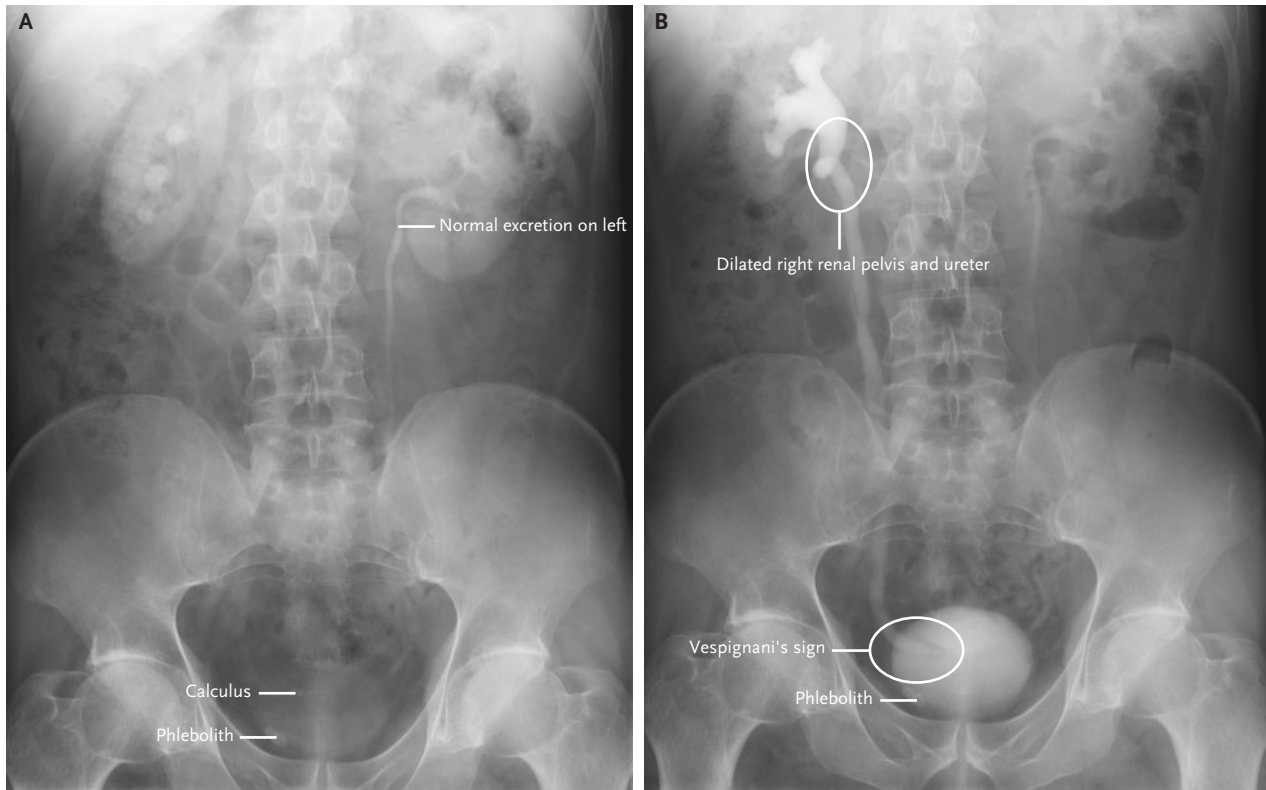


IMAGES IN CLINICAL MEDICINE

Renal Colic



Gauthier Raynal, M.D.
Kamal Achkar, M.D.

Centre Hospitalier
60109 Creil, France

A 57-YEAR-OLD MAN WAS REFERRED TO OUR HOSPITAL BECAUSE OF AN acute onset of right flank pain. An intravenous urogram showed normal excretion from the left kidney, a calculus in the right pelvis, and a phlebolith in the right pelvis at 3 minutes after injection of the contrast material (Panel A), then showed delayed excretion of the contrast material by the right kidney, a dilated right renal pelvis and ureter to the bladder, and a filling defect around the ureteric meatus at 12 minutes after injection (Panel B). The findings are related to edema due to the passage of a calculus. After treatment with a nonsteroidal antiinflammatory drug, the pain resolved and the patient excreted a calculus. He was then discharged from the hospital.

Copyright © 2005 Massachusetts Medical Society.

Web-only Images in Clinical Medicine are published every week in the *Journal*. They are listed (with e page numbers) in the table of contents on the cover of the printed *Journal* and can be seen at www.nejm.org.