

The NEW ENGLAND JOURNAL of MEDICINE

ESTABLISHED IN 1812

JANUARY 5, 2006

VOL. 354 NO. 1

Safety and Efficacy of an Attenuated Vaccine against Severe Rotavirus Gastroenteritis

Guillermo M. Ruiz-Palacios, M.D., Irene Pérez-Schael, M.Sc., F. Raúl Velázquez, M.D., Hector Abate, M.D., Thomas Breuer, M.D., SueAnn Costa Clemens, M.D., Brigitte Cheuvart, Ph.D., Felix Espinoza, M.D., Paul Gillard, M.D., Bruce L. Innis, M.D., Yolanda Cervantes, M.D., Alexandre C. Linhares, M.D., Pío López, M.D., Mercedes Macías-Parra, M.D., Eduardo Ortega-Barría, M.D., Vesta Richardson, M.D., Doris Maribel Rivera-Medina, M.D., Luis Rivera, M.D., Belén Salinas, M.D., Noris Pavía-Ruz, M.D., Jorge Salmerón, M.D., Ricardo Rüttimann, M.D., Juan Carlos Tinoco, M.D., Pilar Rubio, M.D., Ernesto Nuñez, M.D., M. Lourdes Guerrero, M.D., Juan Pablo Yarzabal, M.D., Silvia Damaso, M.Sc., Nadia Tornieporth, M.D., Xavier Sáez-Llorens, M.D., Rodrigo F. Vergara, M.D., Timo Vesikari, M.D., Alain Bouckenoghe, M.D., Ralf Clemens, M.D., Ph.D., Béatrice De Vos, M.D., and Miguel O’Ryan, M.D.,
for the Human Rotavirus Vaccine Study Group*

ABSTRACT

BACKGROUND

The safety and efficacy of an attenuated G1P[8] human rotavirus (HRV) vaccine were tested in a randomized, double-blind, phase 3 trial.

METHODS

We studied 63,225 healthy infants from 11 Latin American countries and Finland who received two oral doses of either the HRV vaccine (31,673 infants) or placebo (31,552 infants) at approximately two months and four months of age. Severe gastroenteritis episodes were identified by active surveillance. The severity of disease was graded with the use of the 20-point Vesikari scale. Vaccine efficacy was evaluated in a subgroup of 20,169 infants (10,159 vaccinees and 10,010 placebo recipients).

RESULTS

The efficacy of the vaccine against severe rotavirus gastroenteritis and against rotavirus-associated hospitalization was 85 percent ($P < 0.001$ for the comparison with placebo) and reached 100 percent against more severe rotavirus gastroenteritis. Hospitalization for diarrhea of any cause was reduced by 42 percent (95 percent confidence interval, 29 to 53 percent; $P < 0.001$). During the 31-day window after each dose, six vaccine recipients and seven placebo recipients had definite intussusception (difference in risk, -0.32 per 10,000 infants; 95 percent confidence interval, -2.91 to 2.18; $P = 0.78$).

CONCLUSIONS

Two oral doses of the live attenuated G1P[8] HRV vaccine were highly efficacious in protecting infants against severe rotavirus gastroenteritis, significantly reduced the rate of severe gastroenteritis from any cause, and were not associated with an increased risk of intussusception. (ClinicalTrials.gov numbers, NCT00139347 and NCT00263666.)

Address reprint requests to Dr. O’Ryan at the Institute of Biomedical Sciences, Faculty of Medicine, University of Chile, Independencia 1027, Santiago, Chile, or at moryan@med.uchile.cl.

*Author affiliations and participants in the Human Rotavirus Vaccine Study are listed in the Appendix.

N Engl J Med 2006;354:11-22.
Copyright © 2006 Massachusetts Medical Society.

ROTAVIRUS IS THE LEADING RECOGNIZED cause of diarrhea-related illness and death among infants and young children.¹⁻⁵ Every year, rotavirus is associated with 25 million clinic visits, 2 million hospitalizations, and more than 600,000 deaths worldwide among children younger than five years of age.^{6,7} Development of a safe and effective rotavirus vaccine is therefore a high priority, particularly but not exclusively in developing countries, where the burden of disease is highest.^{8,9} Since the withdrawal from the market of the tetravalent rhesus–human reassortant vaccine (RotaShield, Wyeth Laboratories) because of an association with intussusception,^{10,11} ruling out such a risk has become critical for the licensure and universal use of any new rotavirus vaccine.

A live attenuated human rotavirus (HRV) vaccine containing the RIX4414 strain of G1P[8] specificity¹² has been developed from the parent vaccine strain 89-12.¹³⁻¹⁵ Clinical trials with the HRV vaccine in Finnish¹⁶ and Latin American¹⁷ (Brazilian, Mexican, and Venezuelan) infants showed that two doses were well tolerated and immunogenic. In phase 2 clinical trials, the efficacy of the vaccine against severe rotavirus gastroenteritis reached 90 to 100 percent.¹⁶⁻¹⁸ Protection started as early as the first dose, lasted until the subjects were up to two years of age, and was demonstrated against both G1P[8] and G9P[8] rotaviruses.¹⁶⁻¹⁸

Although the initial trials had included 6670 infants, a larger, multinational, randomized, double-blind, placebo-controlled, phase 3 trial was required to evaluate any potential risk of intussusception within 31 days after administration of each of two oral doses of the HRV vaccine, as well as any other serious adverse events. Other end points were assessed to confirm previously reported evidence that two oral doses of the HRV vaccine are efficacious against severe rotavirus gastroenteritis, to define the effect of vaccination on the burden of severe diarrhea of any cause, and to extend the observations of protection against different circulating strains in infants up to one year of age.

METHODS

STUDY DESIGN AND PARTICIPANTS

Investigators from Argentina, Brazil, Chile, Colombia, the Dominican Republic, Honduras, Mexico, Nicaragua, Panama, Peru, Venezuela, and Fin-

land recruited infants at public pediatric clinics or hospitals for this randomized, double-blind, placebo-controlled, phase 3 trial. The study protocol and informed-consent document were approved by ethics review committees at each center, and the study was conducted in accordance with the Declaration of Helsinki guidelines for good clinical practice.

After a parent or guardian had provided written informed consent, 6-to-13-week-old healthy infants were enrolled. The infants were randomly assigned to receive two oral doses of either the HRV vaccine or placebo — the first dose at visit 1 and the second at visit 2, one to two months later. After the administration of the second dose, the overall cohort was followed for a median duration of 100 days after the first dose for the assessment of any adverse events, including the occurrence of intussusception (the safety cohort, evaluated at visit 3), and a subgroup of infants was followed for 9 to 10 months for the assessment of efficacy (the efficacy cohort, evaluated at visit 4).

Cases of intussusception, severe gastroenteritis, and serious adverse events were the outcomes captured by an active-surveillance system implemented six months before initiation of the study in all medical facilities able to receive infants with these outcomes (as described in the Supplementary Appendix, available with the full text of this article at www.nejm.org). Outcomes were recaptured during the scheduled visits, if missed by the active-surveillance system.

VACCINE

The HRV vaccine (Rotarix, GlaxoSmithKline Biologicals) contained 10^{6.5} median cell-culture infective doses of the RIX4414 vaccine strain. The placebo had the same constituents as the active vaccine but without the vaccine virus. After the vaccine or placebo had been reconstituted with 1.3 ml of liquid calcium carbonate buffer, an oral dose was administered in a blinded manner to infants when they were approximately two months of age and again when they were four months of age. Infants received routine immunizations according to local regulations; oral poliovirus vaccination was provided at least two weeks before or after the administration of a dose of the HRV vaccine.

DEFINITION OF CASES

All possible cases of intussusception identified by active surveillance were analyzed by an independent

clinical-events committee. Using the case definition from the Brighton Collaboration Working Group on Intussusception¹⁹ and remaining blinded to study-group assignments, this committee categorized cases of intussusception as definite, probable, or possible, according to the certainty of the diagnosis. A case of definite intussusception required confirmation at surgery or autopsy or with the use of imaging techniques, such as imaging with gas- or liquid-contrast enema or abdominal ultrasonography (as described in the Supplementary Appendix).

The clinical case definition of an episode of severe gastroenteritis was an episode of diarrhea (the passage of three or more loose or watery stools within a 24-hour period), with or without vomiting, that required overnight hospitalization or rehydration therapy equivalent to World Health Organization (WHO) plan B (oral rehydration therapy) or plan C (intravenous rehydration therapy) in a medical facility such as a hospital, clinic, or supervised rural health care center. To quantify the severity of gastroenteritis, the same scale used in the evaluation of the rhesus-human reassortant rotavirus vaccine²⁰ was implemented. It is a widely used scoring system²¹ referred to as the Vesikari scale, with scores ranging from 0 to 20 (where higher scores indicate greater severity). An episode of gastroenteritis with a score of 11 or greater was considered a severe episode.²¹

ASSESSMENT OF SAFETY

Serious adverse events were defined as any new health-related problems that resulted in death, were life-threatening, necessitated hospitalization or prolongation of existing hospitalization, or resulted in disability or incapacity. Thus defined, serious adverse events included intussusception. Investigators asked parents about the occurrence of serious adverse events at each follow-up visit and recorded this information. To standardize the reporting of serious adverse events, medical terms used by investigators were analyzed at two levels, according to the Medical Dictionary for Regulatory Activities (MedDRA)²²: one level was that of the unique “preferred term,” and the other that of the “system organ class,” which is a grouping of related preferred terms.

An independent data-monitoring committee of expert clinicians who were not blinded to the study-group assignments and an independent statistician were empowered to stop the trial. They

periodically reviewed all serious adverse events, including intussusception. A blinded safety-review committee independently reviewed all cases involving death to assign a primary cause of death and to determine associated secondary diagnoses and other underlying conditions.

LABORATORY ANALYSIS

Stool specimens from each infant with severe gastroenteritis were tested for rotavirus by means of enzyme-linked immunoassay (Rotaclone, Meridian Bioscience)²³⁻²⁵ at GlaxoSmithKline Biologicals (details are provided in the Supplementary Appendix). Rotavirus serotyping and identification of the vaccine virus were performed by reverse-transcriptase-polymerase-chain-reaction (RT-PCR) analysis followed by a reverse hybridization assay at Delft Diagnostic Laboratory.²⁶ Testing for other enteropathogens was not part of the study protocol and was left to the discretion of the individual investigators or sites.

END POINTS

The primary and secondary safety objectives were to assess the risk of definite intussusception within 31 days after the administration of each vaccine dose and to assess the occurrence of serious adverse events, including intussusception, during the entire study period. The primary efficacy end point was the prevention of severe rotavirus gastroenteritis, according to the case definition, from two weeks after the second dose (i.e., after completion of the full vaccination course) until one year of age. The secondary end points were efficacy against severe rotavirus gastroenteritis defined according to the Vesikari scale, efficacy against gastroenteritis associated with specific circulating rotavirus types, and efficacy against severe rotavirus gastroenteritis occurring after the first dose. Other end points were the prevention of hospitalization due to rotavirus gastroenteritis, of hospitalization for any reason, and of severe gastroenteritis from any cause.

STATISTICAL ANALYSIS

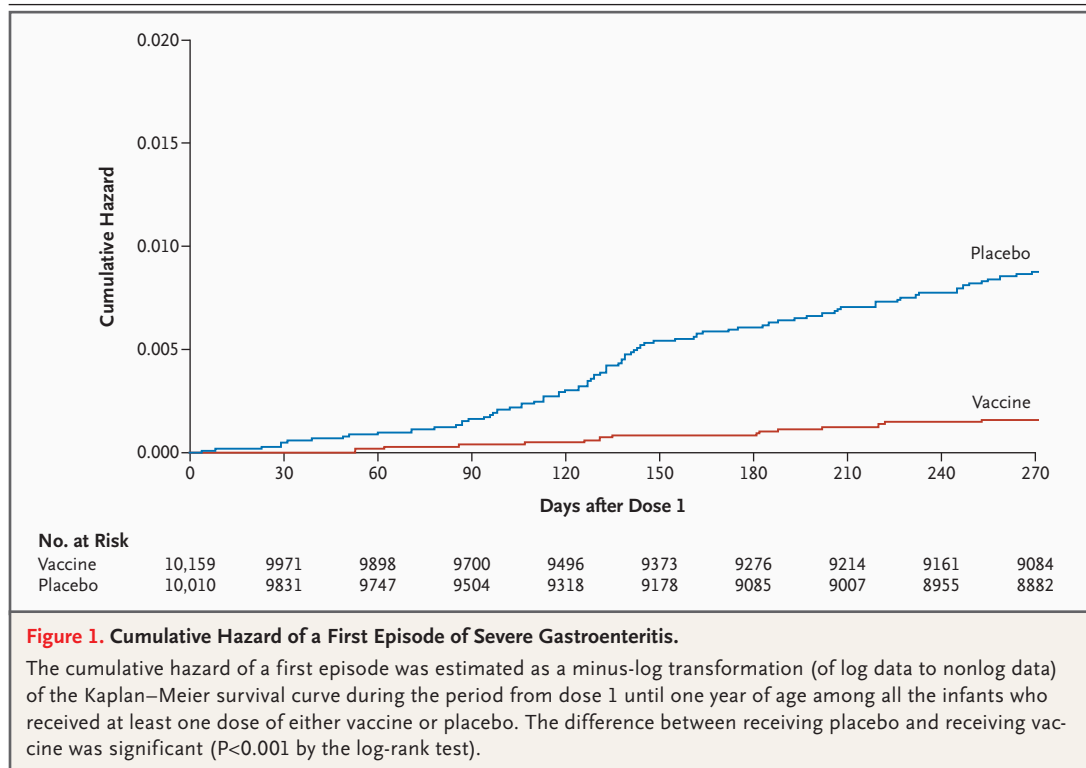
The numbers of infants with intussusception within 31 days after receipt of a dose of vaccine or placebo and during the entire safety-surveillance period were compared between the study groups. The asymptotic standardized 95 percent confidence interval for the difference in risk between the groups and for the relative risk in the vaccine

group as compared with the placebo group was calculated.²⁷ According to prespecified criteria, the primary safety objective would be met if the two-sided 95 percent confidence interval of the difference in the risk of intussusception within 31 days after vaccination was less than 6 per 10,000 and included zero (as described in the Supplementary Appendix). Serious adverse events, reasons for hospitalization, and primary causes of death were categorized according to the MedDRA classification system and compared between the groups with use of the two-sided asymptotic standardized 95 percent confidence interval for the difference in risk, without adjustment for multiple testing. A two-sided asymptotic score test for the null hypothesis of identical incidence in the two groups (alpha level, 0.05) was used to screen for potential differences between the two groups. All infants who had received at least one dose of the study vaccine or placebo were included in the safety analysis.

Assuming an attack rate of 1.5 percent for severe rotavirus gastroenteritis in the placebo group,⁶ a true vaccine efficacy of 70 percent,¹¹ and a 10 percent withdrawal rate, we calculated that a sample of 20,000 infants would provide at least 80 percent power to detect a lower limit of the 95

percent confidence interval for vaccine efficacy of greater than 50 percent. The number of children enrolled varied among countries and centers because enrollment above a minimum target sample size was competitive.

In the efficacy study, an “according-to-protocol” cohort was used to calculate the efficacy of the vaccine and included participants who completed the full two-dose vaccination course and for whom compliance with the protocol was complete (as shown in Fig. 1 of the Supplementary Appendix). The overall efficacy cohort was used to calculate efficacy beginning at time of administration of the first dose and included all infants who received at least one dose of either vaccine or placebo. For each efficacy end point, the percentages of infants for whom at least one episode was reported were compared between the groups and expressed in terms of the relative risk. Vaccine efficacy was calculated with its 95 percent confidence interval with use of the following formula: $(1 - \text{relative risk}) \times 100$. The 95 percent confidence intervals for vaccine efficacy were derived from the exact confidence interval for the Poisson rate ratio.²⁸ In the analysis of vaccine efficacy according to each G serotype of the virus, infants were counted in each G-type category when more than



one G type was isolated for a given episode. The cumulative hazard of a first episode of severe rotavirus gastroenteritis between comparative groups was estimated as a minus-log transformation of the Kaplan–Meier survival curve.

The P value for the cumulative-hazard curve was calculated with the use of the log-rank test. All other reported P values are two-sided for the null hypothesis of equivalence of the two treatment groups. Data analysis was performed with the use of SAS software (version 8.2) and Proc-StatXact 5 with Windows NT 4.0. GlaxoSmithKline Biologicals held the data and performed the analyses, with continuous feedback from the academic authors. The manuscript was written jointly by the company authors and the academic authors, who vouch for the accuracy and completeness of the reported data.

RESULTS

STUDY GROUPS

A total of 63,225 infants were enrolled and were to receive two doses of the HRV vaccine or placebo between August 5, 2003, and March 12, 2004. The entire cohort (the safety cohort) was followed for safety until July 23, 2004, when the last subject completed visit 3. From this cohort, the first 20,169 infants were enrolled in the evaluation of efficacy and were followed until they were one year of age (efficacy cohort) (Fig. 1 of the Supplementary Appendix). In both cohorts, the vaccine and pla-

cebo groups were similar in terms of sex distribution and distribution of race or ethnic background and in terms of mean age at the time of each vaccination and at the end of the safety and efficacy follow-up periods (Table 1). The proportions of infants who were withdrawn from the study and the reasons for withdrawal were similar between the groups (Fig. 1 of the Supplementary Appendix).

INTUSSUSCEPTION

In the safety cohort of 63,225 children, 26 cases of intussusception were detected by capture–recapture methods during hospital surveillance or by active follow-up; 25 cases were determined to be definite intussusception.¹⁹ Thirteen cases of definite intussusception were diagnosed within 31 days after administration of either dose, six in the vaccine group and seven in the placebo group (respective incidence rates, 1.89 and 2.21 per 10,000 infants; difference in risk, -0.32 per 10,000 infants; 95 percent confidence interval, -2.91 to 2.18 ; relative risk in the vaccine group, 0.85 ; $P=0.78$) (Table 2). Twelve cases of intussusception, three in the vaccine group and nine in the placebo group, were reported after the 31-day window (difference in risk, -1.91 per 10,000 infants; 95 percent confidence interval, -4.58 to 0.29 ; $P=0.08$). Thus, during the entire safety-surveillance period (median duration, 100 days after dose 1), intussusception occurred in 9 vaccine recipients and 16 placebo recipients (incidence

Table 1. Characteristics of the Study Populations, According to Study Group.*

Characteristic	Safety Study		Efficacy Study	
	HRV Vaccine	Placebo	HRV Vaccine	Placebo
Infants — no.	31,673	31,552	10,159	10,010
Male sex — no. (%)	16,105 (50.8)	16,150 (51.2)	5100 (50.2)	5160 (51.5)
Age — wk				
At dose 1	8.2±2.39	8.2±2.39	8.4±2.39	8.4±2.38
At dose 2	15.8±3.75	15.8±3.79	16.3±3.74	16.3±3.78
At end of safety or efficacy follow-up	22.7±5.3	22.7±5.3	50.8±10.4	50.5±10.6
Race or ethnic background — no. (%)†				
Hispanic	25,729 (81.2)	25,648 (81.3)	8776 (86.4)	8651 (86.4)
White	3,488 (11.0)	3,434 (10.9)	780 (7.7)	738 (7.4)
Other‡	2,456 (7.8)	2,470 (7.8)	603 (5.9)	621 (6.2)

* Plus–minus values are means ±SD. HRV denotes human rotavirus.

† Race or ethnic group was determined by the investigators.

‡ Other races and ethnic backgrounds included African, South Asian, Arabic or North African, Aborigine, Afro-Caribbean, Caribbean, mixed race, and Indian.

rates, 2.84 and 5.07 per 10,000 infants; difference in risk, -2.23 per 10,000 infants; 95 percent confidence interval, -5.70 to 0.94 ; $P=0.16$) (Table 2).

Of the 25 cases of definite intussusception, 10 occurred after dose 1 (in three vaccinees and seven placebo recipients) and 15 occurred after dose 2 (in six vaccinees and nine placebo recipients). There was no temporal cluster of intussusception cases after either dose. Most of the cases (15 of 25) occurred at four to five months of age. The intussusception was reduced by enema in 6 infants (2 vaccinees and 4 placebo recipients) and by surgery in 19 infants (7 vaccinees and 12 placebo recipients). After hospitalization (mean duration, five days), all the infants had a complete recovery (as described in the Supplementary Appendix).

SERIOUS ADVERSE EVENTS

In the safety cohort, significantly fewer serious adverse events were reported in the vaccine group than in the placebo group (293.0 vs. 331.8 events per 10,000 infants, $P=0.005$) (Table 2). Serious adverse events related to gastroenteritis, such as

diarrhea, vomiting, dehydration, and hypovolemic shock, were reported in fewer vaccinees than placebo recipients. The hospitalization rate was also lower in the vaccine group than in the placebo group (279.7 vs. 317.9 hospitalizations per 10,000 infants, $P=0.005$) (Table 2). A post hoc exploratory analysis revealed a reduction of 42 percent (95 percent confidence interval, 28.6 to 53.1 percent) in the vaccine group in the need for hospitalization for gastroenteritis or diarrhea of any cause during the 100-day observation period (100 hospitalizations, vs. 179 hospitalizations in the placebo group; $P<0.001$).

Overall mortality did not differ significantly between the vaccine recipients and the placebo recipients. Fifty-six deaths occurred in the vaccine group, and 43 in the placebo group ($P=0.20$) (Table 2); 4 and 2, respectively, were related to diarrhea ($P=0.41$). The causes of diarrhea in those cases were not determined, because stool samples were not available.

Further analysis of the deaths stratified at the level of MedDRA preferred terms suggested that there was a potential imbalance of deaths due to

Table 2. Risk of Definite Intussusception and Other Serious Adverse Events among Infants Receiving Vaccine or Placebo.*

Adverse Event	HRV Vaccine (N=31,673)		Placebo (N=31,552)		Difference in Risk per 10,000 Infants (95% CI) [†]	Relative Risk (95% CI) [‡]	P Value [§]
	No. of Events	Incidence Rate [¶]	No. of Events	Incidence Rate [¶]			
Definite intussusception							
≤31 Days after either dose	6	1.89	7	2.21	-0.32 (-2.91 to 2.18)	0.85 (0.30 to 2.42)	0.78
≤31 Days after dose 1	1	0.31	2	0.63	-0.32 (-2.03 to 1.20)	0.50 (0.07 to 3.80)	0.56
≤31 Days after dose 2	5 ^{**}	1.57	5 ^{††}	1.58	-0.01 (-2.48 to 2.45)	0.99 (0.31 to 3.21)	0.99
Between dose 1 and visit 3 ^{‡‡}	9	2.84	16	5.07	-2.23 (-5.70 to 0.94)	0.56 (0.25 to 1.24)	0.16
Serious adverse event between dose 1 and visit 3							
Overall ^{§§}	928	290.99	1047	331.83	-38.84 (-66.02 to -11.73)	0.88 (0.81 to 0.96)	0.005
Hospitalization	886	279.73	1003	317.89	-38.15 (-64.76 to -11.62)	0.88 (0.81 to 0.96)	0.005
Death	56	17.68	43	13.63	4.05 (-2.15 to 10.40)	1.30 (0.87 to 1.93)	0.20

* HRV denotes human rotavirus, and CI confidence interval.

[†] The difference in risk is the incidence rate in the HRV-vaccine group minus that in the placebo group.

[‡] The relative risk is the risk in the HRV-vaccine group as compared with that in the placebo group.

[§] P values are the results of a comparison between the groups by a two-sided asymptotic score test for the null hypothesis of identical incidence in the groups (alpha level, 0.05).

[¶] The incidence rate is the number of infants with the specified serious adverse event per 10,000 infants.

^{||} The 31-day postvaccination window included the day of vaccination and the 30-day period after the dose.

^{**} Data were available for 29,616 infants.

^{††} Data were available for 29,465 infants.

^{‡‡} Visit 3 took place 30 to 90 days after dose 2.

^{§§} Overall serious adverse events were any untoward medical occurrence that resulted in death, was life-threatening, required hospitalization or prolonging of existing hospitalization, or resulted in disability or incapacity. These events were not necessarily mutually exclusive.

pneumonia among infants receiving the HRV vaccine. This potential imbalance was a further investigated. In 16 vaccine recipients and 6 placebo recipients, the primary cause of death was related to pneumonia ($P=0.05$). However, the distribution of pneumonia-related deaths within the first 31 days after vaccination did not differ statistically between the two groups (seven cases in the vaccine group and three in the placebo group). An additional analysis showed that there was no difference between the two study groups in terms of the number of serious adverse events related to pneumonia (280 in the vaccine group and 276 in the placebo group), overall pneumonia-related hospitalizations (277 and 273, respectively), or pneumonia-related hospitalizations within 31 days after the first dose (99 and 94), within 31 days after the second dose (49 and 56), or at any other time point. Data on retention within the efficacy cohort are provided in the Supplementary Appendix.

EFFICACY OF THE VACCINE AGAINST SEVERE ROTAVIRUS GASTROENTERITIS

There were 12 children in the vaccine group and 77 in the placebo group with severe rotavirus gastroenteritis according to the clinical definition (2.0 vs. 13.3 children with at least one episode per 1000 infant-years, $P<0.001$), resulting in a vaccine efficacy of 84.7 percent ($P<0.001$) against severe rotavirus gastroenteritis from two weeks after dose 2 until one year of age (Table 3). Similar results were obtained with the overall cohort of infants who received at least one dose of vaccine or placebo (vaccine efficacy from dose 1 until one year of age, 81.1 percent; 95 percent confidence interval, 68.4 to 95.3 percent; $P<0.001$). Hospitalization for at least one night was required for 9 children in the vaccine group and 59 in the placebo group (1.5 vs. 10.2 hospitalizations per 1000 infant-years), for a vaccine efficacy against hospitalization for severe rotavirus gastroenteritis of 85.0 percent ($P<0.001$) (Table 3).

The cumulative hazard of severe rotavirus gastroenteritis was significantly lower in the vaccine group than in the placebo group, both in the according-to-protocol analysis (data not shown) and in the intention-to-treat analysis ($P<0.001$ by the log-rank test) (Fig. 1). The difference increased with time and led to an approximately sevenfold risk of severe rotavirus gastroenteritis in the placebo group as compared with the vaccine group at one year of age.

Eleven of 12 children with episodes of severe gastroenteritis in the vaccine group and 71 of 77 in the placebo group had a Vesikari score of 11 or greater, yielding a vaccine efficacy of 84.8 percent ($P<0.001$). For increasing disease severity with scores between 11 and 20, the efficacy of the vaccine was increasingly higher, reaching 100 percent against more severe rotavirus gastroenteritis, defined as gastroenteritis with a Vesikari score of 19 or 20 (Table 4). Sixteen episodes of severe rotavirus gastroenteritis with a Vesikari score of 11 or greater were reported from dose 1 until dose 2 (6 in the vaccine group and 10 in the placebo group).

The type-specific²⁹ efficacy of the vaccine against wild-type strains is shown in Table 3. Its efficacy against severe rotavirus episodes with a Vesikari score of 11 or greater caused by type G1P[8] strains, homologous to the vaccine strain, was 90.8 percent ($P<0.001$). The efficacy of the vaccine against strains sharing only the P[8] antigen (G3P[8], G4P[8], and G9P[8]) was 87.3 percent ($P<0.001$). The type G2P[4] rotavirus, which does not share either the G or the P antigen with the vaccine strain, was detected in specimens from five infants in the vaccine group and nine in the placebo group, for an efficacy of 41.0 percent ($P=0.30$).

EFFECT OF THE VACCINE ON THE BURDEN OF DIARRHEAL ILLNESS

The incidence rate of severe gastroenteritis of any cause that required rehydration according to WHO plan B or C was 30.9 per 1000 infant-years in the vaccine group, as compared with 51.7 per 1000 infant-years in the placebo group, for an overall rate reduction of 40.0 percent among vaccine recipients ($P<0.001$). Likewise, the rate of hospitalization for diarrhea of any cause was significantly reduced, by 42.0 percent, in the vaccine group ($P<0.001$) (Table 3).

DISCUSSION

In this large, multinational trial conducted in 20,169 infants for efficacy and 63,225 infants for safety, the live attenuated RIX4414 G1P[8] HRV vaccine was highly protective against severe rotavirus gastroenteritis and related hospitalizations. This rotavirus vaccine also proved to be safe with respect to the risk of intussusception.

Within this trial setting, the vaccine was not

Table 3. Efficacy of the HRV Vaccine against Gastroenteritis during the Period from Two Weeks after Dose 2 until One Year of Age.*

Type of Gastroenteritis	HRV Vaccine (N=9009)		Placebo (N=8858)		Relative Risk†	Vaccine Efficacy (95% CI)
	No. of Infants with ≥1 Episode	1000 Infant-Yr Ratio‡	No. of Infants with ≥1 Episode	1000 Infant-Yr Ratio‡		
Severe, according to clinical case definition§						
Rotavirus gastroenteritis						
Severe	12	2.0	77	13.3	0.153	84.7 (71.7 to 92.4)
Hospitalization	9	1.5	59	10.2	0.150	85.0 (69.6 to 93.5)
Gastroenteritis from any cause						
Severe	183	30.9	300	51.7	0.600	40.0 (27.7 to 50.4)
Hospitalization	145	24.5	246	42.4	0.580	42.0 (28.6 to 53.1)
Serotype-specific gastroenteritis						
G1P[8]¶	3	0.5	36**	6.2	0.082	91.8 (74.1 to 98.4)
G3P[8], G4P[8], G9P[8]	4††	0.66	31‡‡	5.3	0.126	87.3 (64.1 to 96.7)
G2P[4]	6	1.0	10§§	1.7	0.590	41.0 (−79.2 to 82.4)
Serotype-specific severe rotavirus gastroenteritis with a score of ≥11 on the Vesikari scale¶¶						
G1P[8]¶	3	0.5	32	5.5	0.092	90.8 (70.5 to 98.2)
G3P[8], G4P[8], G9P[8]	4	0.7	30	5.2	0.130	86.9 (62.8 to 96.6)
G2P[4]	5	0.8	9	1.5	0.546	45.4 (−81.5 to 85.6)

* Infants with episodes involving more than one isolated G type were counted in each of the detected type categories. One isolate from the placebo group could not be serotyped because the quantity of the sample was insufficient; one isolate from the placebo group was negative on reverse-transcriptase–polymerase-chain-reaction analysis; and one isolate from the placebo group could not be typed, but the vaccine strain was ruled out. HRV denotes human rotavirus, and CI confidence interval.

† The relative risk is the ratio of the incidence rate among infants in the vaccine group with at least one episode to the incidence rate among infants in the placebo group with at least one episode.

‡ The 1000 infant-year ratio is the number of infants presenting with ≥1 specified episode per 1000 infants per year.

§ The clinical definition of a case, according to the study protocol, was an episode of diarrhea (passage of three or more loose or watery stools within one day) with or without vomiting that required overnight hospitalization or rehydration therapy equivalent to World Health Organization plan B (oral rehydration therapy) or plan C (intravenous rehydration therapy) in a medical facility such as a hospital, clinic, or supervised rural health care center.

¶ All G1 types isolated were wild-type rotavirus.

|| G1P[8] type alone was isolated from two infants; G1P[8] and G9P[8] types were isolated from one infant.

** G1P[8] type alone was isolated from 34 infants; G1P[8] and G9P[8] types were isolated from 1 infant; and G1, G2, and G9 types were isolated from 1 infant.

†† G3P[8] type alone was isolated from one infant, G4P[8] alone from one infant, and G9P[8] alone from one infant; both G1P[8] and G9P[8] were isolated from one infant.

‡‡ G3P[8] type alone was isolated from 8 infants, G4P[8] alone from 2 infants, and G9P[8] alone from 19 infants; G1P[8] and G9P[8] were isolated from 1 infant and G1P[8], G2P[4], and G9P[8] from 1 infant.

§§ G2P[4] alone was isolated from nine infants, and G1P[8], G2P[4], and G9P[8] were isolated from one infant.

¶¶ Scores on the Vesikari scale range from 0 to 20, with higher scores indicating more severe cases. An episode with a score of 11 or greater was considered severe.

associated with an increased risk of intussusception during a 31-day period after administration of either of the two doses, as compared with placebo. Because the second dose was administered toward the peak age incidence of intussusception in the Latin American population,³⁰⁻³⁴ the risk of intussusception associated with the

HRV vaccine would have been most apparent. However, cases of intussusception after dose 2 were evenly distributed between the HRV group and the placebo group. Not only is the observed risk estimate of −0.32 per 10,000 infants below the initial risk increase of 4 per 10,000^{35,36} that led to the withdrawal of tetravalent rhesus–human

Table 4. Efficacy of the HRV Vaccine against Severe Rotavirus Gastroenteritis with a Vesikari Score between 11 and 20 during the Period from Two Weeks after Dose 2 until One Year of Age.*

Vesikari Score	HRV Vaccine (N=9009)		Placebo (N=8858)		Relative Risk†	Vaccine Efficacy (95% CI)
	No. of Infants with ≥1 Episode	1000 Infant-Yr Ratio‡	No. of Infants with ≥1 Episode	1000 Infant-Yr Ratio‡		
≥11	11	1.9	71	12.2	0.152	84.8 (71.1–92.7)
≥15	7	1.2	54	9.3	0.127	87.3 (71.9–95.1)
≥19	0	0	16	2.8	0	100.0 (74.5–100.0)

* Scores on the Vesikari scale range from 0 to 20, with higher scores indicating more severe cases. An episode with a score of 11 or greater was considered severe. CI denotes confidence interval.

† The relative risk is the ratio of the incidence rate among infants in the vaccine group with at least one episode to the incidence rate among infants in the placebo group with at least one episode.

‡ The 1000 infant-year ratio is the number of infants presenting with ≥1 specified episode per 1000 infants per year.

reassortant vaccine; it also is below the subsequent consensus risk estimate of 1 per 10,000^{37,38} for that vaccine. By meeting the predefined criteria of a 95 percent confidence interval for a difference in risk that included zero and was below 6 per 10,000 infants, this trial shows that the HRV vaccine, given according to a two-dose vaccination schedule at two and four months of age, is safe with respect to the risk of intussusception. The incidence rate of intussusception observed in the placebo group (51 per 100,000 infants) is consistent with rates previously reported in Latin America.^{30–34} In addition, the age at intussusception was similar in infants who had received vaccine and those who had received placebo — in contrast to the post-marketing observation with the tetravalent rhesus–human reassortant vaccine that vaccinees with intussusception tended to be younger than unvaccinated infants.³⁵ These data suggest that the intussusception problem encountered with the tetravalent rhesus–human reassortant vaccine may have resulted from the use of a rhesus strain, rather than from the oral administration of live rotavirus in general.^{35,39} These observations are in agreement with a recent report that wild-type rotavirus infection is not associated with intussusception.⁴⁰

The overall profile of serious adverse events was in favor of the HRV vaccine: fewer vaccinated infants than infants who received placebo had serious adverse events or required hospitalization because of gastrointestinal events. Numerous comparisons of serious adverse events grouped according to MedDRA preferred term (without adjustment for multiplicity) found no risk imbalance attributable to the vaccine that could be sup-

ported by clinical review and no plausible temporal or biologic causality. There was no significant difference in overall mortality between the groups. An observed potential imbalance in the number of pneumonia-related deaths among the vaccine recipients was not supported by observation of other pneumonia-related serious adverse events.

The vaccine proved to be highly protective against episodes of rotavirus gastroenteritis measured by a clinical definition for case capture that focused on hospitalization and rehydration, as well as by the validated Vesikari scale,²¹ which includes quantifiable outcomes related to diarrhea, vomiting, fever, dehydration, and hospitalization. The efficacies observed with two doses of this HRV vaccine — 85 percent against severe episodes of rotavirus gastroenteritis and 100 percent against more severe episodes — are similar to those found in a previous HRV vaccine study conducted in Brazil, Mexico, and Venezuela^{17,18} and to those of a three-dose study of tetravalent rhesus–human reassortant vaccine in Venezuela.⁴¹ The results are also in agreement with data indicating that two wild-type rotavirus infections are fully protective against subsequent episodes of severe disease.⁴²

The live attenuated vaccine protected against common serotypes circulating in Latin America and the Caribbean. A high level of protection (vaccine efficacy, 91 percent) was demonstrated against homologous G1P[8] rotaviruses, which have two outer capsid proteins (VP4 and VP7) and one inner capsid protein (VP6) antigenically similar to those in the HRV vaccine.²⁹ It also protected well against strains sharing only the P[8] genotype (the VP4 antigen) and the VP6 antigen (vaccine effica-

cy, 87 percent). Protection against rotavirus strains not having any of the outer or inner capsid antigens of the HRV vaccine seemed to be lower (vaccine efficacy, 45 percent). However, in a meta-analysis including the results of this study and the two phase 2 studies from Finland¹⁶ and Latin America¹⁷ (all based on identical methods and efficacy criteria), the efficacy of the vaccine against the G2P[4] type was 67 percent (95 percent confidence interval, 15 to 87 percent),⁴³ indicating that the vaccine can also protect, though to a lesser extent, against strains that do not share G or P epitopes with the vaccine strain.

Of public health importance is the finding that the HRV vaccine conferred 42 percent protection against hospitalization for gastroenteritis of any cause. This represents a significant reduction in the overall burden of gastroenteritis. With rotaviruses having been detected only in 26 percent of the cases of severe gastroenteritis in the control group, the observed 42 percent protection was greater than expected. The additional protection may be explained in part by rotavirus infections undetected by enzyme-linked immunoassay.⁴² Therefore, it appears that the burden of disease caused by rotavirus is much greater than that reflected by the incidence of rotavirus-associated hospitalizations calculated by antigen detection in the stool. This discordance between specific and nonspecific results may be further explored by means of RT-PCR, a more sensitive method, to detect rotavirus in stool specimens²⁶ or by probe studies, as has been reported for other vaccines, such as those against *Haemophilus influenzae* type b and *Streptococcus pneumoniae*.⁴⁴

The observed reduction in the rate of severe gastroenteritis of any cause and the strong protection against severe gastroenteritis due to G1P[8]

and non-G1P[8] rotaviruses indicate the potential public health value of the HRV vaccine. Efforts should now be focused on bringing this vaccine to infants as part of routine immunization programs, especially in areas where rotavirus is associated with an important proportion of the burden of illness and childhood death. Wide use of this vaccine will require parallel implementation of post-marketing surveillance, including follow-up investigations of deaths among HRV vaccine recipients, to answer a number of remaining questions. Because it has been shown that initiating the administration of tetravalent rhesus-human reassortant vaccine to infants after the age of 90 days considerably increases the rate of intussusception,⁴⁵ one of the relevant issues that will need to be monitored in the future includes intussusception-related safety when the vaccine is used in older children. Another important remaining question is efficacy against possible other new emerging serotypes that do or do not share any capsid antigen with the vaccine virus.⁴⁶

Supported by GlaxoSmithKline Biologicals, which funded and coordinated the study.

Drs. Ruiz-Palacios, Velázquez, Ortega-Barría, Pavía-Ruz, Nuñez, Sáez-Llorens, and Vergara report having received grant support from GlaxoSmithKline Biologicals; Dr. Linhares, lecture fees from GlaxoSmithKline Biologicals; Dr. López, consultation fees, lecture fees, and grant support from GlaxoSmithKline Biologicals; Dr. Macías-Parra, lecture fees and grant support from GlaxoSmithKline Biologicals; Dr. Richardson, consultation fees and grant support from GlaxoSmithKline Biologicals; Dr. Vesikari, consultation and lecture fees and grant support from GlaxoSmithKline Biologicals and grant support from Merck Sharp & Dohme; and Dr. O'Ryan, consultation and lecture fees from GlaxoSmithKline Biologicals. No other potential conflict of interest relevant to this article was reported.

We are indebted to the infants and families who participated in this trial, to Karin Hardt for contributions to the study design, to Francis Van Brusteghem for global study management, and to Fernando Aguirre and Silvina Santucho for regional study management.

APPENDIX

The authors' affiliations are as follows: the Instituto Nacional de Ciencias Medicas y Nutricion, México Distrito Federal, Mexico (G. M.R.-P.); Sección Enfermedades Entéricas, Instituto de Biomedicina-Fuvesin, Carmelitas, Caracas, Venezuela (I.P.-S.); Unidad de Investigación Médica en Enfermedades Infecciosas y Parasitarias, Hospital de Pediatría, Centro Médico Nacional Siglo XXI, Instituto Mexicano del Seguro Social, México Distrito Federal, Mexico (F.R.V.); Hospital Dr. Humberto Notti, Mendoza, Argentina (H.A.); GlaxoSmithKline Biologicals, Rixensart, Belgium (T.B., B.C., P.G., J.P.Y., S.D., N.T., A.B., B.D.V.); GlaxoSmithKline Biologicals, Latin America, Rio de Janeiro (S.C.C., R.C.); Carlos Chagas Institute, Rio de Janeiro (S.C.C.); Universidad Nacional Autónoma de León, León, Nicaragua (F.E.); GlaxoSmithKline, King of Prussia, Pa. (B.L.I.); GlaxoSmithKline, México Distrito Federal, Mexico (Y.C.); Instituto Evandro Chagas, Secretaria de Vigilância em Saúde, Ministry of Health, Belém, Pará, Brazil (A.C.L.); Clínica Materno Infantil Los Farallones, Cali, Colombia (P.L.); Instituto Nacional de Pediatría, México D.F., Mexico (M.M.-P.); Institute for Advanced Scientific Investigations and High Technology Services, Panama, Panama (E.O.-B.); Hospital Infantil de Mexico, México Distrito Federal, Mexico (V.R.); Infectóloga Pediatra, Hospital de Especialidades, Instituto Hondureño de Seguridad Social, Tegucigalpa, Honduras (D.M.R.-M.); Hospital Nuestra Señora de la Altigracia, Santa Domingo, Dominican Republic (L.R.); Ciudad Hospitalaria Dr. Enrique Tejera-Insalud, Universidad de Carabobo, Servicio de Hidratación del Hospital de Niños, Valencia, Estado Carabobo, Venezuela (B.S.); Departamento de Medicina Experimental, Universidad Nacional Autónoma de México, México Distrito Federal, Mexico (N.P.-R.); Instituto Mexicano del Seguro Social, Unidad de Investigación Epidemiológica y en Servicios de Salud, Cuernavaca Morelos, Mexico (J.S.); GlaxoSmithKline, Buenos Aires, Argentina (R.R.); Hospital General de Durango, Durango, Mexico (J.C.T.); GlaxoSmithKline, San José, Costa Rica

(P.R.); Universidad de Concepción, Concepción, Chile (E.N.); Instituto Nacional de Ciencias Médicas y Nutrición Salvador Zubiran, México Distrito Federal, Mexico (M.L.G.); Infectious Disease Department, Hospital del Niño, Panama, Panama (X.S.-L.); Universidad de Valparaíso, Faculty of Medicine, Preclinical Department, Valparaíso, Chile (R.F.V.); University of Tampere Medical School, University of Tampere, Tampere, Finland (T.V.); and Institute of Biomedical Sciences, Faculty of Medicine, University of Chile, Santiago (M.O.).

The participants in the Human Rotavirus Vaccine Study were as follows: **Publication Steering Committee:** M. O’Ryan, G. Ruiz-Palacios, I. Pérez-Schael, A.C. Linhares, F.R. Velázquez, X. Sáez-Llorens, T. Vesikari, N. Tornieporth, S. Costa Clemens, B. Cheuvart, S. Damaso, R. Clemens, B.L. Innis, B. De Vos, P. Gillard, and A. Bouckennooghe. **Investigators or Coinvestigators:** *Argentina (4671 participants):* H. Abate; *Brazil (3218 participants):* A.C. Linhares; *Chile (3458 participants):* M. O’Ryan, E. Nuñez, and R.F. Vergara; *Colombia (3910 participants):* P. López; *Dominican Republic (4056 participants):* L. Rivera; *Finland (2060 participants):* T. Vesikari; *Honduras (4195 participants):* D.M. Rivera-Medina; *Mexico (13,245 participants):* F.R. Velázquez, M. Macías-Parra, J.C. Tinoco, G.M. Ruiz-Palacios, N. Pavía-Ruz, V. Richardson, J. Salmerón, C. Aranza, E. Nandi, L.M. Guerrero, R. Borgaro, and P. Ramírez; *Nicaragua (4057 participants):* F. Espinoza; *Panama (4061 participants):* E. Ortega-Barría and T. de León; *Peru (12,044 participants):* C.F. Lanata; and *Venezuela (4250 participants):* B. Salinas and I. Pérez-Schael. **Medical Advisors:** A. Abdelnour, Y. Cervantes, M. Navarrete, J.C. Ovalle, M. Pulkkinen, P. Rubio, R. Rüttimann, N. Sanchez, and J.P. Yarzabal. **Contributors:** *Study development:* T. Breuer, B. Cheuvart, S.A. Costa Clemens, B. De Vos, P. Gillard, B.L. Innis, and N. Tornieporth (GlaxoSmithKline Biologicals, Belgium and Brazil). *Acquisition or interpretation of data:* G.M. Ruiz-Palacios, I. Pérez-Schael, F.R. Velázquez, H. Abate, T. Breuer, S. Costa Clemens, B. Cheuvart, F. Espinoza, P. Gillard, B.L. Innis, Y. Cervantes, A. C. Linhares, P. López, M. Macías-Parra, E. Ortega-Barría, V. Richardson, D.M. Rivera-Medina, L. Rivera, B. Salinas, N. Pavía-Ruz, J. Salmerón, R. Rüttimann, J.C. Tinoco, P. Rubio, E. Nuñez, M.L. Guerrero, J.P. Yarzabal, S. Damaso, N. Tornieporth, X. Sáez-Llorens, R.F. Vergara, T. Vesikari, A. Bouckennooghe, R. Clemens, B. De Vos, and M. O’Ryan. *Revision and final approval of the manuscript:* G.M. Ruiz-Palacios, I. Pérez-Schael, F.R. Velázquez, H. Abate, T. Breuer, S. Costa Clemens, B. Cheuvart, F. Espinoza, P. Gillard, B.L. Innis, Y. Cervantes, A.C. Linhares, P. López, M. Macías-Parra, E. Ortega-Barría, V. Richardson, D.M. Rivera-Medina, L. Rivera, B. Salinas, N. Pavía-Ruz, J. Salmerón, R. Rüttimann, J.C. Tinoco, P. Rubio, E. Nuñez, M.L. Guerrero, J.P. Yarzabal, S. Damaso, N. Tornieporth, X. Sáez-Llorens, R.F. Vergara, T. Vesikari, A. Bouckennooghe, R. Clemens, B. De Vos, and M. O’Ryan. *Statistical analyses:* B. Cheuvart and S. Damaso (GlaxoSmithKline Biologicals, Belgium). *Technical writing assistance:* D. Shirgaonkar (GlaxoSmithKline Biologicals, Belgium). *Coordination of manuscript submission and revision:* A. Ali (GlaxoSmithKline Biologicals, Belgium) and L. Rouxhet (GlaxoSmithKline Biologicals, Belgium). **Central Study Coordinators:** A. Acero, V.A. Alvarez, F. Cubas, L. Diaz, P. Dieryck, T. Herremans, P. Maldini, M. del Carmen Martínez, M. Medina, C. Rassofofer Padilla, V. Reynaert, L.E. Rodríguez, M. Rojas, A. Sabillon, S. Sumanen, D. Valera, and I. Zenteno. **Independent Data-Monitoring Committee:** K. Kotloff (University of Maryland), C. de Quadros (Albert B. Sabin Vaccine Institute), Z.A. Bhutta (Aga Khan University, Pakistan), W. Blackwelder, G. Hussey (University of Cape Town, South Africa), B. Ivanoff (Résidence les Ronsiers, Switzerland), J.I. Santos Preciado (Hospital Infantil de Mexico, Mexico), and M. Comblain (S.-Clinica, Belgium). **Clinical Events Committee:** J. Bines (University of Melbourne, Australia), G.V. Fascinetto (Hospital Infantil de Mexico, Mexico), and M. De Campo (Monash Medical Centre, Victoria, Australia). **Safety Review Committee:** F. Cutts (Medical Research Council, United Kingdom), F. Zupp (University of Mainz, Germany), and C. Alpuche (National Autonomous University of Mexico, Mexico).

REFERENCES

- Velazquez FR, Garcia-Lozano H, Rodriguez E, et al. Diarrhea morbidity and mortality in Mexican children: impact of rotavirus disease. *Pediatr Infect Dis J* 2004;23:Suppl:S149-S155.
- Guardado JAA, Clara WAW, Turcios RM, et al. Rotavirus in El Salvador: an outbreak, surveillance and estimates of disease burden, 2000-2002. *Pediatr Infect Dis J* 2004;23:Suppl:S156-S160.
- Salinas B, Gonzalez G, Gonzalez R, Escalona M, Materan M, Schael IP. Epidemiologic and clinical characteristics of rotavirus disease during five years of surveillance in Venezuela. *Pediatr Infect Dis J* 2004;23:Suppl:S161-S167.
- O’Ryan M, Perez-Schael I, Mamani N, et al. Rotavirus-associated medical visits and hospitalizations in South America: a prospective study at three large sentinel hospitals. *Pediatr Infect Dis J* 2001;20:685-93.
- Kane EM, Turcios RM, Arvay ML, Garcia S, Bresee JS, Glass RI. The epidemiology of rotavirus diarrhea in Latin America: anticipating rotavirus vaccines. *Rev Panam Salud Publica* 2004;16:371-7.
- Parashar UD, Hummelman EG, Bresee JS, Miller MA, Glass RI. Global illness and deaths caused by rotavirus disease in children. *Emerg Infect Dis* 2003;9:565-72.
- Parashar U. Session 1: epidemiology and disease burden. In: Proceedings of the Sixth International Rotavirus Symposium, Mexico City, July 7-9, 2004:6.
- Rotavirus vaccines, an update. *Wkly Epidemiol Rec* 2003;78:2-3.
- Vaccine research and development: rotavirus vaccines for developing countries. *Wkly Epidemiol Rec* 1997;72:35-40.
- Intussusception among recipients of rotavirus vaccine — United States, 1998-1999. *MMWR Morb Mortal Wkly Rep* 1999;48:577-81.
- Withdrawal of rotavirus vaccine recommendation. *MMWR Morb Mortal Wkly Rep* 1999;48:1007.
- Vesikari T, Karvonen A, Korhonen T, et al. Safety and immunogenicity of RIX4414 live attenuated human rotavirus vaccine in adults, toddlers and previously uninfected infants. *Vaccine* 2004;22:2836-42.
- Bernstein DI, Smith VE, Sherwood JR, et al. Safety and immunogenicity of live, attenuated human rotavirus vaccine 89-12. *Vaccine* 1998;16:381-7.
- Bernstein DI, Sack DA, Rothstein E, et al. Efficacy of live, attenuated, human rotavirus vaccine 89-12 in infants: a randomised placebo-controlled trial. *Lancet* 1999;354:287-90.
- Bernstein DI, Sack DA, Reisinger K, Rothstein E, Ward RL. Second-year follow-up evaluation of live, attenuated human rotavirus vaccine 89-12 in healthy infants. *J Infect Dis* 2002;186:1487-9.
- Vesikari T, Karvonen A, Puustinen L, et al. Efficacy of RIX4414 live attenuated human rotavirus vaccine in Finnish infants. *Pediatr Infect Dis J* 2004;23:937-43.
- Salinas B, Schael IP, Linhares AC, et al. Evaluation of safety, immunogenicity and efficacy of an attenuated rotavirus vaccine, RIX4414: a randomized, placebo-controlled trial in Latin American infants. *Pediatr Infect Dis J* 2005;24:807-16.
- De Vos B, Vesikari T, Linhares AC, et al. A rotavirus vaccine for prophylaxis of infants against rotavirus gastroenteritis. *Pediatr Infect Dis J* 2004;23:Suppl:S179-S182.
- Bines JE, Kohl KS, Forster J, et al. Acute intussusception in infants and children as an adverse event following immunization: case definition and guidelines of data collection, analysis, and presentation. *Vaccine* 2004;22:569-74.
- Santosham M, Moulton LH, Reid R, et al. Efficacy and safety of high-dose rhesus-human reassortant rotavirus vaccine in Native American populations. *J Pediatr* 1997;131:632-8.
- Ruuska T, Vesikari T. Rotavirus disease in Finnish children: use of numerical scores for clinical severity of diarrhoeal episodes. *Scand J Infect Dis* 1990;22:259-67.

22. MedDRA Maintenance and Support Services Organization home page. Reston, Va.: MedDRA MSSO, 2005. (Accessed December 9, 2005, at <http://www.meddramsso.com>.)
23. Bresee J, Fang Z-Y, Wang B, et al. First report from the Asian Rotavirus Surveillance Network. *Emerg Infect Dis* 2004;10:988-95.
24. Griffin DD, Kirkwood CD, Parashar UD, et al. Surveillance of rotavirus strains in the United States: identification of unusual strains. *J Clin Microbiol* 2000;38:2784-7.
25. Hsu VP, Staat MA, Roberts N, et al. Use of active surveillance to validate International Classification of Diseases code estimates of rotavirus hospitalizations in children. *Pediatrics* 2005;115:78-82.
26. Pang XL, Joensuu J, Hoshino Y, Kapikian AZ, Vesikari T. Rotaviruses detected by reverse transcription polymerase chain reaction in acute gastroenteritis during a trial of rhesus-human reassortant rotavirus tetravalent vaccine: implications for vaccine efficacy analysis. *J Clin Virol* 1999;13:9-16.
27. Miettinen O, Nurminen N. Comparative analysis of two rates. *Stat Med* 1985;4:213-66.
28. Tang ML, Ng HK. Comment on: confidence limits for the ratio of two rates based on likelihood scores: non-iterative method. *Stat Med* 2004;23:685-92.
29. Linhares AC, Bresee JS. Rotavirus vaccines and vaccination in Latin America. *Rev Panam Salud Publica* 2000;8:305-31.
30. Lucero Y, Valenzuela MT, O'Ryan M. Clinical and epidemiological profile of intestinal intussusception among infants of metropolitan Santiago. *Rev Med Chil* 2004;132:565-72. (In Spanish.)
31. O'Ryan M, Lucero Y, Pena A, Valenzuela MT. Two year review of intestinal intussusception in six large public hospitals of Santiago, Chile. *Pediatr Infect Dis J* 2003;22:717-21.
32. Abate H, Linhares AC, Venegas G, et al. A multi-center study of intussusception in Latin America: first year results. Presented at the International Congress of Pediatrics, Cancun, Mexico, August 15-20, 2004 (paper).
33. Perez-Schael I, Escalona M, Salinas B, Materan M, Perez ME, Gonzalez G. Intussusception-associated hospitalization among Venezuelan infants during 1998 through 2001: anticipating rotavirus vaccines. *Pediatr Infect Dis J* 2003;22:234-9.
34. Saez-Llorens X, Guevara JN. Intussusception and rotavirus vaccines: what is the background risk? *Pediatr Infect Dis J* 2004;23:363-5.
35. Murphy TV, Gargiullo PM, Massoudi MS, et al. Intussusception among infants given an oral rotavirus vaccine. *N Engl J Med* 2001;344:564-72. [Erratum, *N Engl J Med* 2001;344:1564.]
36. Kramarz P, France EK, Destefano F, et al. Population-based study of rotavirus vaccination and intussusception. *Pediatr Infect Dis J* 2001;20:410-6.
37. Murphy BR, Morens DM, Simonsen L, Chanock RM, La Montagne JR, Kapikian AZ. Reappraisal of the association of intussusception with the licensed live rotavirus vaccine challenges initial conclusions. *J Infect Dis* 2003;187:1301-8.
38. Peter G, Myers MG. Intussusception, rotavirus, oral vaccines: summary of a workshop. *Pediatrics* 2002;110(6):e67.
39. Heaton PM. Overview: characteristics of the investigational pentavalent human-bovine reassortant rotavirus vaccine (PRV): primary efficacy and safety results of the large-scale Rotavirus Efficacy and Safety Trial (REST). Presented at the meeting of the Advisory Committee on Immunization Practices, Atlanta, February 10-11, 2005.
40. Velázquez FR, Luna G, Cedillo R, Torres J, Muñoz O. Natural rotavirus infection is not associated to intussusception in Mexican children. *Pediatr Infect Dis J* 2004;23:Suppl:S173-S178.
41. Perez-Schael I, Guntinas MJ, Perez M, et al. Efficacy of the rhesus rotavirus-based quadrivalent vaccine in infants and young children in Venezuela. *N Engl J Med* 1997;337:1181-7. [Erratum, *N Engl J Med* 1998;338:1002.]
42. Velazquez FR, Matson DO, Calva JJ, et al. Rotavirus infection in infants as protection against subsequent infections. *N Engl J Med* 1996;335:1022-8.
43. Perez-Schael I, Linhares AC, Vesikari T, et al. Two doses of the human attenuated rotavirus vaccine RIX4414 (Rotarix) show heterotypic protection in Latin America and Europe. In: Program and abstracts of the 45th Interscience Conference on Antimicrobial Agents and Chemotherapy, Washington, D.C., December 16-19, 2005 (poster) (in press).
44. Gessner BD, Sutanto A, Linehan M, et al. Incidences of vaccine-preventable Haemophilus influenzae type b pneumonia and meningitis in Indonesian children: hamlet-randomised vaccine-probe trial. *Lancet* 2005;365:43-52.
45. Simonsen L, Viboud C, Elixhauser A, Taylor RJ, Kapikian AZ. More on RotaShield and intussusception: the role of age at the time of vaccination. *J Infect Dis* 2005;192:Suppl 1:S36-S43.
46. Santos N, Hoshino Y. Global distribution of rotavirus serotypes/genotypes and its implication for the development and implementation of an effective rotavirus vaccine. *Rev Med Virol* 2005;15:29-56.

Copyright © 2006 Massachusetts Medical Society.

ELECTRONIC ACCESS TO THE JOURNAL'S CUMULATIVE INDEX

At the *Journal's* site on the World Wide Web (www.nejm.org), you can search an index of all articles published since January 1975 (abstracts 1975-1992, full text 1993-present). You can search by author, key word, title, type of article, and date. The results will include the citations for the articles plus links to the full text of articles published since 1993. For nonsubscribers, time-limited access to single articles and 24-hour site access can also be ordered for a fee through the Internet (www.nejm.org).