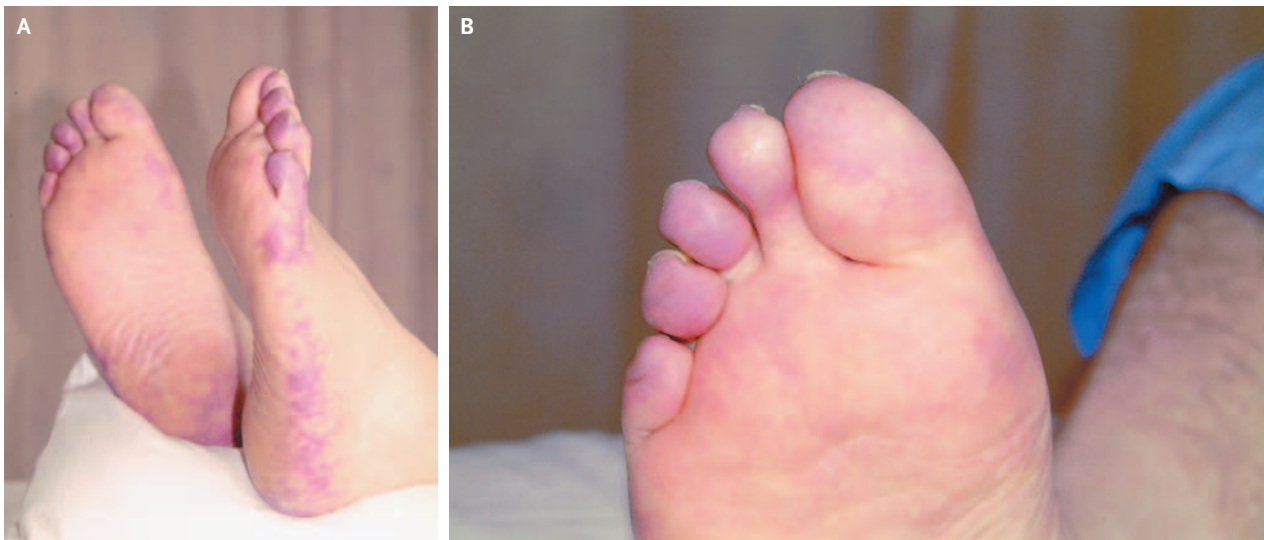


IMAGES IN CLINICAL MEDICINE

## Cholesterol Emboli after Coronary Angioplasty



Omar Rana, M.B., B.S.  
William McCrea, F.R.C.P.

Great Western Hospital  
Swindon SN3 6BB, United Kingdom

**A** 72-YEAR-OLD MAN PRESENTED WITH UNSTABLE ANGINA. AN URGENT cardiac catheterization showed clinically significant disease in the right coronary artery, which was stented. Twelve hours after the procedure, livedo reticularis developed on his legs and there was a bluish discoloration of his toes (Panels A and B). The evaluation was notable for an increase in his serum creatinine level from 1.5 mg per deciliter (135  $\mu$ mol per liter) to 3.1 mg per deciliter (276  $\mu$ mol per liter), eosinophilia of 7.4 percent, and a normal result on renal ultrasonography. A diagnosis of cholesterol emboli was made. The patient recovered uneventfully.

Copyright © 2006 Massachusetts Medical Society.

Web-only Images in Clinical Medicine are published every week in the *Journal*. They are listed (with e page numbers) in the table of contents on the cover of the printed *Journal* and can be seen at [www.nejm.org](http://www.nejm.org).