

your life. Start by asking yourself what the state of your family's health would be if each member were living on \$1 a day. Then assert your professional will.

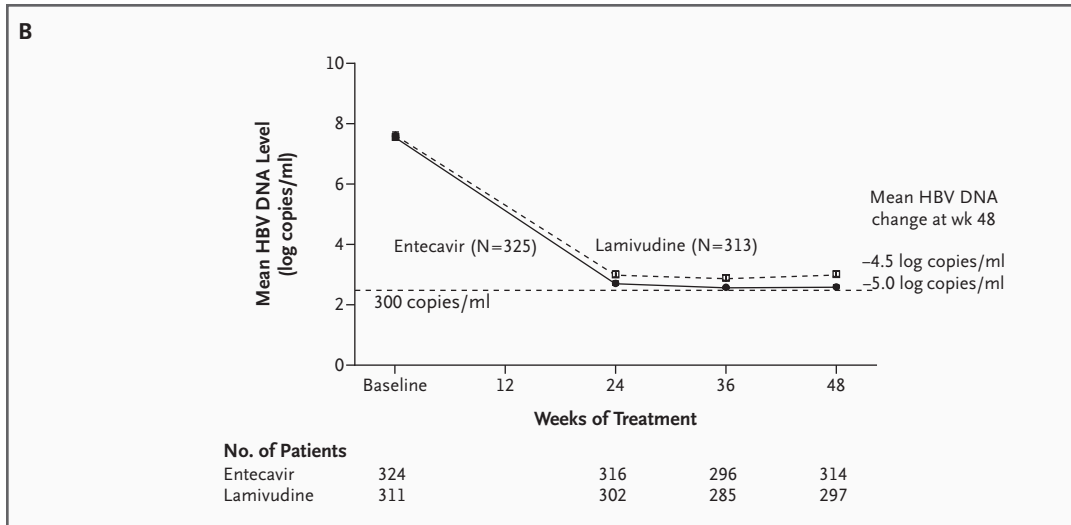
Ralph Crawshaw, M.D.

Oregon Health Sciences University
Portland, OR 97201
rckos@imagina.com

Book Reviews Copyright © 2006 Massachusetts Medical Society.

CORRECTION

Entecavir versus Lamivudine for Patients with HBeAg-Negative Chronic Hepatitis B (March 9, 2006;354:1011-20). On page 1017, the data plots in Figure 1B are incorrectly placed. A revised figure is shown here. The figure has also been corrected on the *Journal's* Web site at www.nejm.org. We regret the error.



NOTICES

Notices submitted for publication should contain a mailing address and telephone number of a contact person or department. We regret that we are unable to publish all notices received. Notices also appear on the *Journal's* Web site (www.nejm.org/meetings). The listings can be viewed in their entirety or searched by location, month, or key word.

17TH VIDEO-UROLOGY WORLD CONGRESS

The congress will be held in Bucharest, Romania, June 22–24.

Contact Robert Stoica, Center for Urologic Surgery, Dialysis, and Renal Transplantation, Fundeni Clinical Institute, Sos. Fundeni, No. 258, Sect. 2, 022328 Bucharest, Romania; or call or fax 40 21 300 75 70; or see <http://www.videourology2006.ro>; or e-mail txfundeni@easynet.ro.

ASIAN EUROPEAN CONFERENCE ON AVIAN INFLUENZA

The "First International Conference on Avian Influenza in Humans: Latest Advances on Prevention, Therapies, and Protective Measures" will be held in Paris, June 29 and 30.

Contact Société Française des Antioxydants (SFA), 15 Rue de la Paix, 75002 Paris, France; or call 00 33 1 55 04 77 55; or fax 00 33 1 55 04 77 57; or see <http://www.isanh.com>; or e-mail influenza2006@wanadoo.fr.

BARTH SYNDROME FOUNDATION

The foundation will hold its Third International Scientific and Medical Conference, entitled "Cracking the Mysteries of Barth Syndrome," in Buena Vista, Fla., July 6–8.

Contact Lynda Sedefian, Barth Syndrome Foundation, P.O. Box 974, Perry, FL 32348; or call (850) 223-1128; or fax (850) 223-3911; or see <http://www.barthsyndrome.org>; or e-mail Lsedefia@nycap.rr.com.

NORTH CAROLINA OCCUPATIONAL SAFETY AND HEALTH EDUCATION & RESEARCH CENTER

The following courses will be offered in Chapel Hill, N.C.: "COHN/Safety Management Certification Review Course" (June 5–8); "Certified Hazardous Material Manager (CHMM) Review" (June 19–22; exam date, June 23); and "Asbestos Operations and Maintenance" (Refresher Course: July 10; Course: Sept. 11 and 12).

Contact Occupational Safety and Health Education & Research Center, University of North Carolina, 3300 Hwy. 54 W., Chapel Hill, NC 27516-8264; or call (888) 235-3320 (natl.) or (919) 962-2101 (N.C.); or fax (919) 966-7579; or see <http://www.sph.unc.edu/osherc/>; or e-mail oshercww@sph.unc.edu.

BIOTECHNOLOGY AND MEDICAL DEVICES CONFERENCE

The conference will be held in Jerusalem, Israel, May 29–31.

Contact BIOMED Israel 2006, P.O. Box 56, Ben Gurion Airport 70100, Israel; or call 972 3 972 7500; or fax 972 3 972 7555; or see <http://www.kenes.com/biomed>; or e-mail Bio-med@kenes.com.