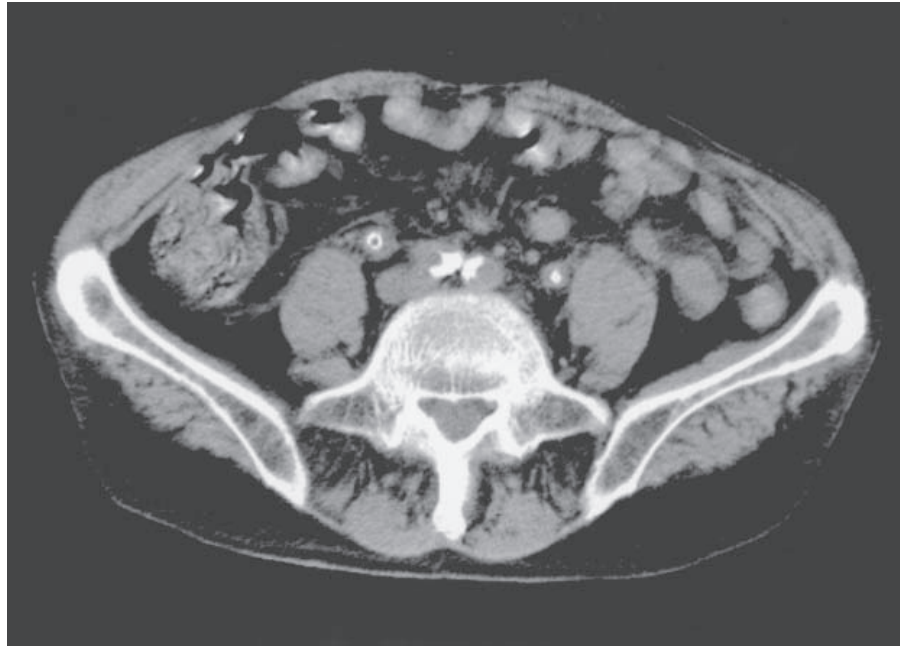


IMAGES IN CLINICAL MEDICINE

## A Medical Mystery — Concentric Calcification



Dong Hoon Daniel Kim, M.D.  
Victor L. Yu, M.D.

Veterans Affairs Medical Center  
Pittsburgh, PA 15240

**A**N ELDERLY MAN REPORTED HAVING RECURRENT HEMATURIA OVER A period of two years. He had undergone transurethral resection of the prostate because of benign prostatic hypertrophy two years earlier. He had evidence of chronic renal insufficiency, with a serum creatinine level of 4.4 mg per deciliter (389  $\mu$ mol per liter). Multiple urinalyses in the previous several months had revealed gross and microscopic hematuria, pyuria, triple phosphate crystals, and a pH of more than 9.0. For the previous two years, urinalyses had been intermittently positive for nitrates. Multiple urine cultures during the previous nine months had yielded only “contaminants.” A computed tomographic scan of the pelvis appears here. What is the diagnosis?

*Editor's note:* We invite our readers to submit their answers at [www.nejm.org/mystery](http://www.nejm.org/mystery). We will publish the diagnosis in the Correspondence section of the March 30 issue and e-mail it to everyone who submits an answer. All answers must be received by February 16, 2006.

Copyright © 2006 Massachusetts Medical Society.