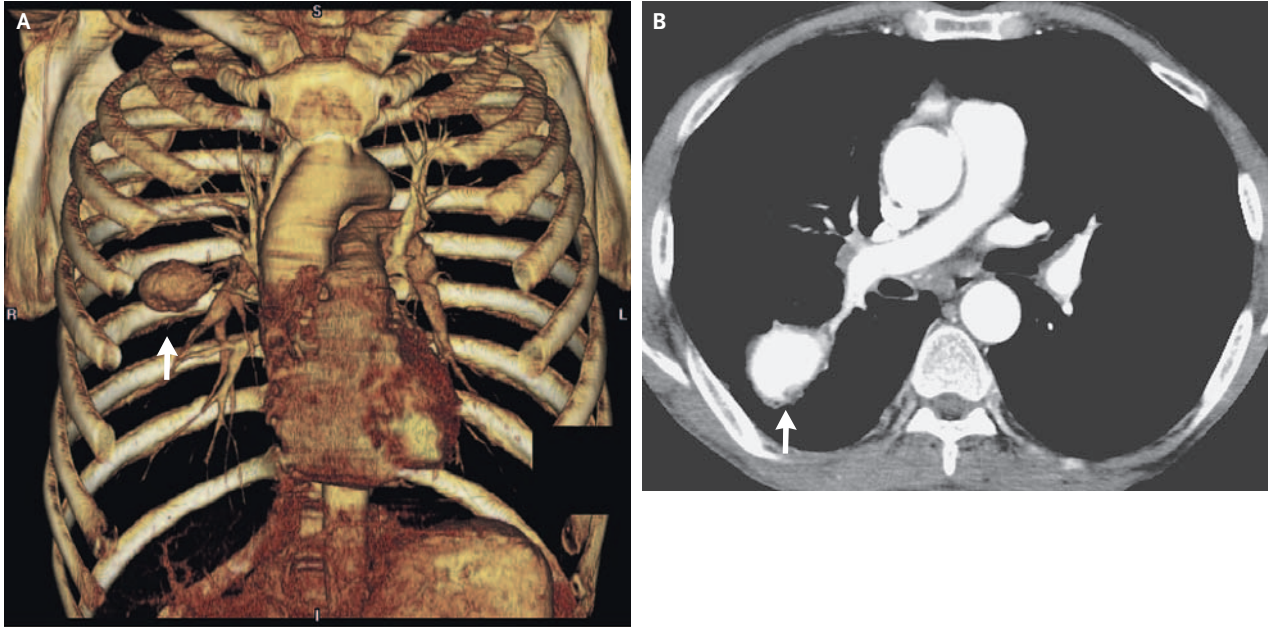


IMAGES IN CLINICAL MEDICINE

Rasmussen's Aneurysm



A 54-YEAR-OLD MAN PRESENTED WITH A 3-MONTH HISTORY OF HEMOPTYSIS of approximately 50 ml per day. He had a remote history of pulmonary tuberculosis. On the second hospital day, he had an episode of massive hemoptysis. Dynamic and three-dimensional views of the pulmonary and bronchial vasculature on computed tomography obtained after the injection of contrast material demonstrated a large pulmonary aneurysm (Panels A and B, arrows). The patient underwent successful embolization of the pulmonary-artery aneurysm and its feeding vessel. However, the hemoptysis resolved only after subsequent embolization of the bronchial artery.

Copyright © 2006 Massachusetts Medical Society.

Michel M. van den Heuvel,
M.D., Ph.D.
Jacques J. van Rensburg, M.D.

University of Stellenbosch
Cape Town 7505, South Africa
heuvel@sun.ac.za