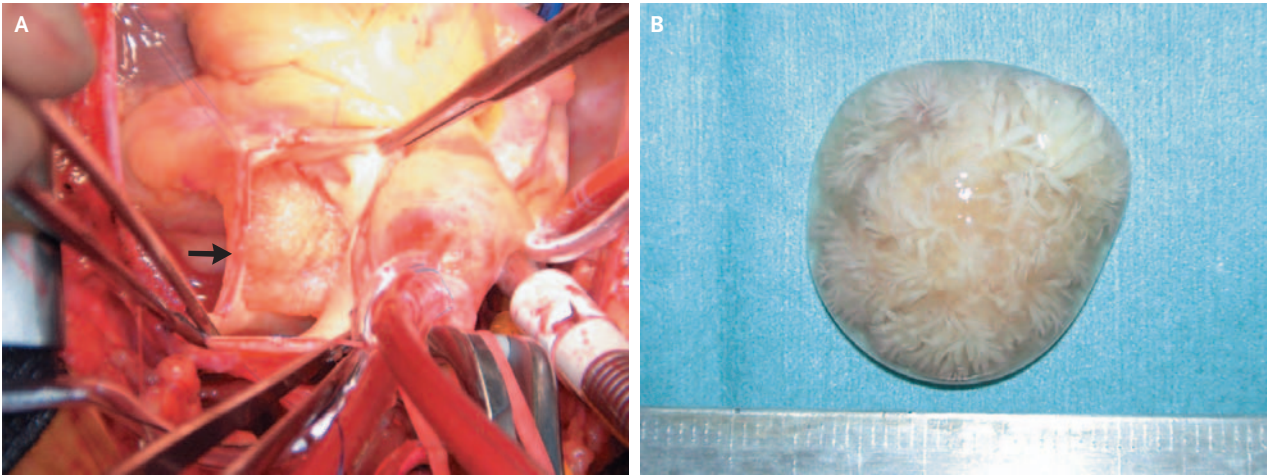


IMAGES IN CLINICAL MEDICINE

Papillary Fibroelastoma of the Pulmonary Artery



A 74-YEAR-OLD MAN UNDERWENT AN ULTRASONOGRAPHIC EXAMINATION of the right upper quadrant as part of an evaluation for a hepatoma. Incidentally, a tumor in the pulmonary artery, filling the space over the pulmonary valve, was noted. On questioning, he reported no cardiac symptoms. At surgery, the tumor, located near the pulmonary valve (Panel A, arrow), had a short stalk connected to the valvular commissure. Macroscopically, it had a characteristic flower-like appearance, and, immersed in water, it looked like a sea anemone (Panel B). The tumor was histologically diagnosed as a papillary fibroelastoma covered with CD34-positive endothelial cells. This tumor is a benign avascular growth of the endocardium with a matrix consisting of mucopolysaccharides. The patient had an uneventful course after the operation.

Copyright © 2007 Massachusetts Medical Society.

Takeshi Kondo, M.D.
Satoshi Tobe, M.D.

Kobe University Graduate School
of Medicine
Kobe 650-0017, Japan
kondo@med.kobe-u.ac.jp