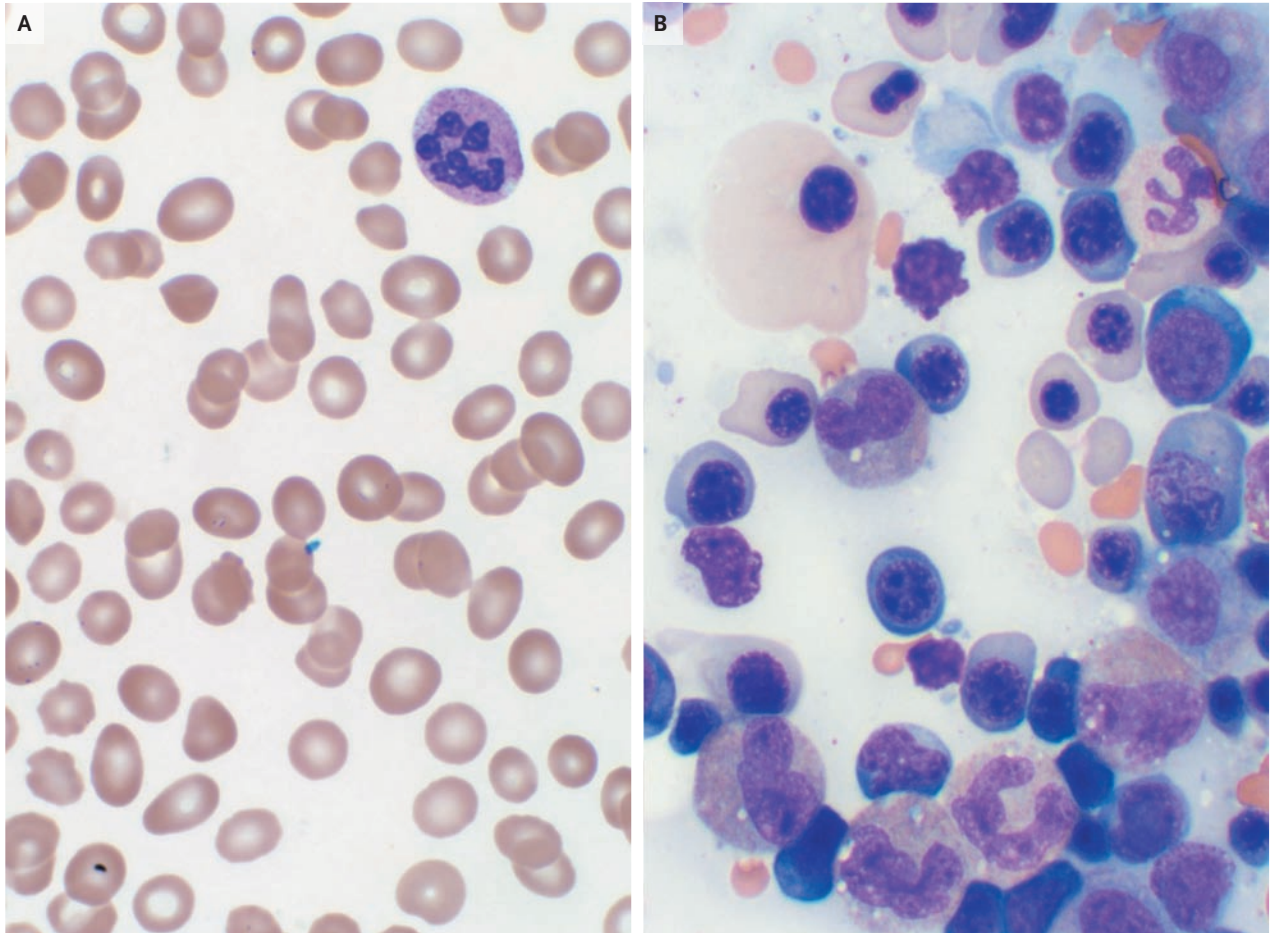


IMAGES IN CLINICAL MEDICINE

A Medical Mystery — A 71-Year-Old Man with Pancytopenia



A 71-YEAR-OLD-MAN PRESENTED TO THE EMERGENCY DEPARTMENT WITH dizziness, progressive lethargy, and confusion, which he reported having had for the past 10 days. A complete blood count showed pancytopenia. A peripheral-blood smear (Panel A) and bone marrow aspirate (Panel B) are shown. What is the diagnosis?

Editor's note: We invite our readers to submit their answers at www.nejm.org/mystery. We will publish the diagnosis in the Correspondence section of the December 25, 2008, issue and e-mail it to everyone who submits an answer. All answers must be received by November 12, 2008.

Copyright © 2008 Massachusetts Medical Society.

Julia M. Braza, M.D.
Parul Bhargava, M.D.

Beth Israel Deaconess Medical Center
Boston, MA 02215